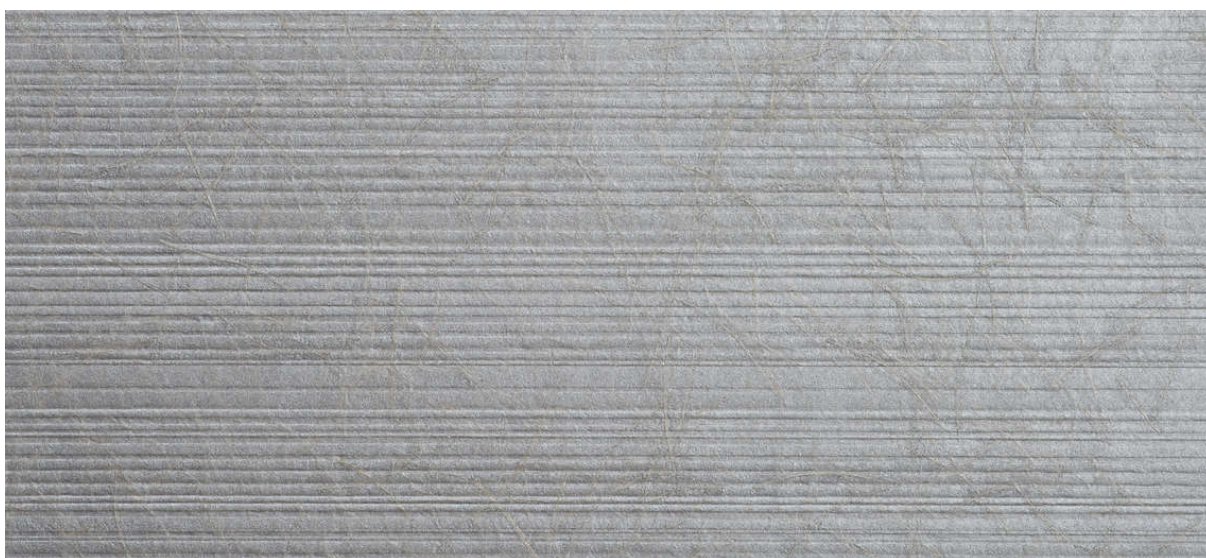


terral

2617.40 - 2617.49



collection
wallcovering
08
textile

description
fine, horizontal rib with all-over sisal fibres
in metallic

composition
70% woodpulp / 20% polyester / 10% sisal
on a paper backing

width
± 137 cm, ± 54 inches

weight
± 263 gr/m², ± 12 oz/yd¹

flame retardancy
EN 13501, B s2 d0
ASTM E84, A

colorfastness to light
ISO 105-B02, 6 (scale 1 - 8)



REACTION TO FIRE: EN 13501-1



terral

2617.40 - 2617.49



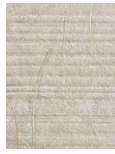
2617.40



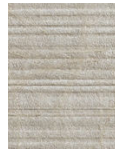
2617.41



2617.42



2617.43



2617.44



2617.45



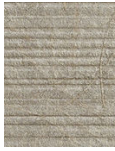
2617.46



2617.47



2617.48



2617.49