











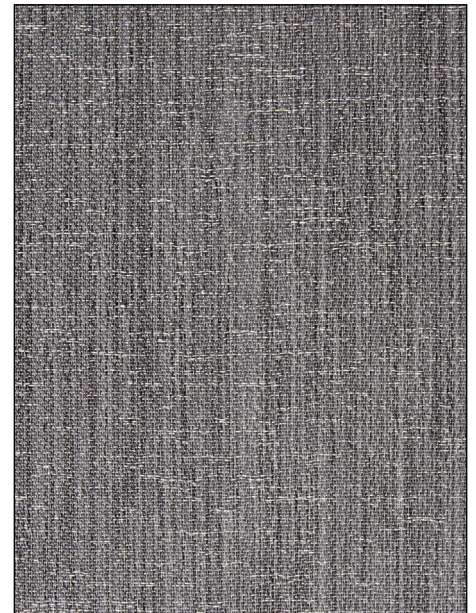
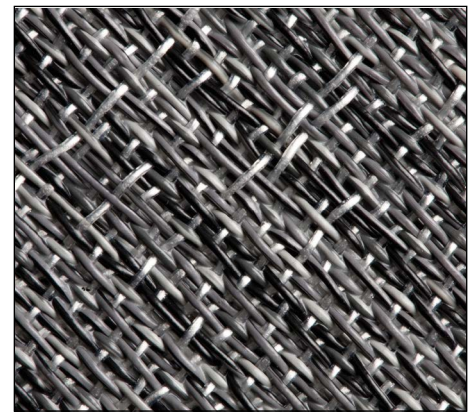


## PLANET - ST

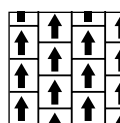
## Vinyl / Tiles

Carpet tiles from 2tec2 are designed for long and intensive use thanks to the innovative material they are made from: a glass fibre core coated with vinyl and finished with a homogeneous backing. A high-tech floor covering that offers quite a few advantages. First of all, the carpet tiles dampen noise and provide a pleasant, warm walking contact. Furthermore, the product is water repellent, wear resistant and suited both for indoor and outdoor use. The woven vinyl fabric cannot absorb dirt, so that stains can be easily removed. In brief, a durable solution for commercial or residential projects, both indoors and outdoors. As a part of the vinyl tiles collection, the groundbreaking Seamless Tiles (ST) are really one of a kind: when fitted in a uni-directional pattern, these floor tiles have the sleek, unbroken appearance of a wall-to-wall floor covering.

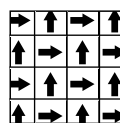
|  |                                    |   |  |
|--|------------------------------------|---|--|
|  | <b>Manufacturing process</b>       | Jaquard woven   |  |
|  | <b>Composition</b>                 | 80% vinyl / 20% fiberglass  |  |
|  | <b>Backing</b>                     | Vinyl   |  |
|   | <b>Total thickness</b>             | ISO 1765  | 3,3 mm / 0.13"                                 |
|  | <b>Total weight</b>                | ISO 8543  | 4500 g/m <sup>2</sup> 132.7 oz/yd <sup>2</sup> |
|  | <b>Tile size</b><br>16 pcs per box | EN 994  | 50 cm x 50 cm<br>19.69" x 19.69"               |
|  | <b>Level of Use</b>                | EN 15114<br>ASTM D5252  | Class 33<br>Heavy commercial use               |
|  | <b>Castor chair suitability</b>    | EN 985  | Continuous use                                 |
|  | <b>Reaction to fire</b>            | EN 13501-1  | Bfl S1   |
|  | <b>Walking test</b>                | ISO 6356<br>AATC 134-2006   | < 2 kv<br>permanently antistatic               |
|  | <b>Light fastness</b>              | ISO 105-B02   | ≥ 7  |
|  | <b>Slip resistance</b>             | EN 13893<br>ASTM C1028-07   | ≥ 0,3<br>0,85                                  |
|  | <b>Impact sound</b>                | ISO 140-8   | 14 dB  |
|  | <b>Dimensional stability</b>       | EN 986<br>ISO 2551  | Meets the requirements                         |
|  | <b>CE Certificate</b>              | EN 14041  | 0493-CPD-0036                                  |
|  | <b>Recommended glue</b>            | Peel up glue (e.g. 'BlitzFix' by Wulff - <a href="http://www.wulff-gmbh.de">www.wulff-gmbh.de</a> ) |  |



### Fitting Pattern



Ashlar



Quarterturn