











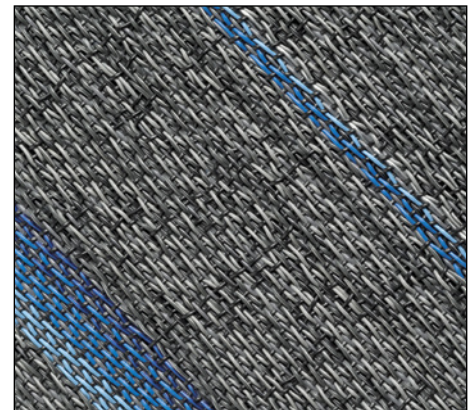


## MOONLESS NIGHT BLUE - ST

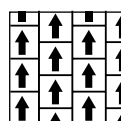
## Vinyl / Tiles

Carpet tiles from 2tec2 are designed for long and intensive use thanks to the innovative material they are made from: a glass fibre core coated with vinyl and finished with a homogeneous backing. Thanks to its unique composition, this superior flooring is resistant to wear and adheres to the highest quality standards. For high traffic locations, 2tec2 delivers all of the advantages of woven vinyl - **durability, hygiene and chemical, water and stain resistance** - combined with the visual appeal of woven textiles. As a part of the vinyl tiles collection, the groundbreaking **Seamless Tiles (ST)** are really one of a kind: when fitted in a uni-directional pattern, these floor tiles **have the sleek, unbroken appearance of a wall-to-wall floor covering.**

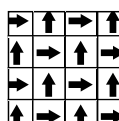
	<b>Manufacturing process</b>	Jaquard woven	
	<b>Composition</b>	80% vinyl / 20% fiberglass	
	<b>Backing</b>	Vinyl	
	<b>Total thickness</b>	ISO 1765	3,3 mm / 0.13"
	<b>Total weight</b>	ISO 8543	4500 g/m <sup>2</sup> 132.7 oz/yd <sup>2</sup>
	<b>Tile size</b> 16 pcs per box	EN 994	50 cm x 50 cm 19.69" x 19.69"
	<b>Level of Use</b>	EN 15114 ASTM D5252	Class 33 Heavy commercial use
	<b>Castor chair suitability</b>	EN 985	Continuous use
	<b>Reaction to fire</b>	EN 13501-1	Bfl S1
	<b>Walking test</b>	ISO 6356 AATC 134-2006	< 2 kv Permanently antistatic
	<b>Light fastness</b>	ISO 105-B02	≥ 7
	<b>Slip resistance</b>	EN 13893 ASTM C1028-07	≥ 0,3 0,85
	<b>Impact sound</b>	ISO 140-8	14 dB
	<b>Dimensional stability</b>	EN 986 ISO 2551	Meets the requirements
	<b>CE Certificate</b>	EN 14041	0493-CPD-0036



### Fitting Pattern



Ashlar



Quarterturn