











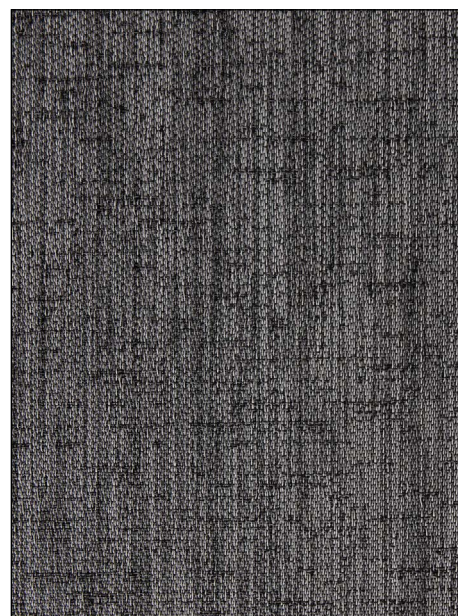
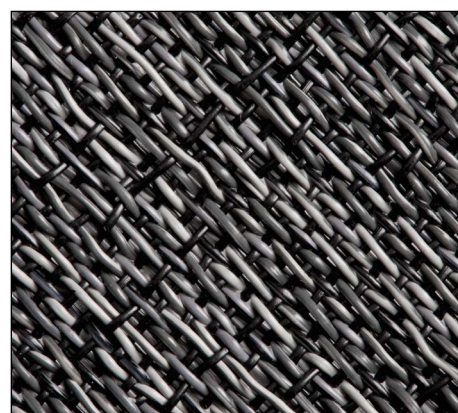


MOONLESS NIGHT - ST

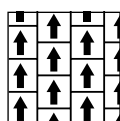
Vinyl / Tiles

Carpet tiles from 2tec2 are designed for long and intensive use thanks to the innovative material they are made from: a glass fibre core coated with vinyl and finished with a homogeneous backing. A high-tech floor covering that offers quite a few advantages. First of all, the carpet tiles dampen noise and provide a pleasant, warm walking contact. Furthermore, the product is water repellent, wear resistant and suited both for indoor and outdoor use. The woven vinyl fabric cannot absorb dirt, so that stains can be easily removed. In brief, a durable solution for commercial or residential projects, both indoors and outdoors. As a part of the vinyl tiles collection, the groundbreaking Seamless Tiles (ST) are really one of a kind: when fitted in a uni-directional pattern, these floor tiles have the sleek, unbroken appearance of a wall-to-wall floor covering.

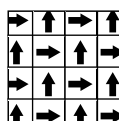
	Manufacturing process	Jaquard woven	
	Composition	80% vinyl / 20% fiberglass	
	Backing	Vinyl	
	Total thickness	ISO 1765	3,3 mm / 0.13"
	Total weight	ISO 8543	4500 g/m ² 132.7 oz/yd ²
	Tile size 16 pcs per box	EN 994	50 cm x 50 cm 19.69" x 19.69"
	Level of Use	EN 15114 ASTM D5252	Class 33 Heavy commercial use
	Castor chair suitability	EN 985	Continuous use
	Reaction to fire	EN 13501-1	Bfl S1
	Walking test	ISO 6356 AATC 134-2006	< 2 kv permanently antistatic
	Light fastness	ISO 105-B02	≥ 7
	Slip resistance	EN 13893 ASTM C1028-07	≥ 0,3 0,85
	Impact sound	ISO 140-8	14 dB
	Dimensional stability	EN 986 ISO 2551	Meets the requirements
	CE Certificate	EN 14041	0493-CPD-0036
	Recommended glue	Peel up glue (e.g. 'BlitzFix' by Wulff - www.wulff-gmbh.de)	



Fitting Pattern



Ashlar



Quarterturn