

kai

2616.80 - 2616.84



collection
wallcovering
08
textile

description
leather look with a graphic dot in metallic

composition
70% woodpulp / 30% polyester on a paper backing

width
± 137 cm, ± 54 inches

weight
± 161 gr/m², ± 7 oz/yd¹

pattern repeat
height: 2.9 cm, 1.1 inches
width: 2.9 cm, 1.1 inches

flame retardancy
EN 13501, B s2 d0
ASTM E84, A

colorfastness to light
ISO 105-B02, 6 (scale 1 - 8)

CE EN 15102:2007+A1:2011
 16
 DoP-CPR-T2016-001
 wallcovering

REACTION TO FIRE: EN 13501-1



kai

2616.80 - 2616.84



2616.80



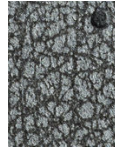
2616.81



2616.82



2616.83



2616.84