

bic.

LUXURY CARPETS

AIRCRAFT DIVISION



Company presentation

B.I.C.-Carpets (Belgian International Carpets) was established in 1956.

Our Aircraft Division, has been manufacturing aircraft carpets for over 40 years for civil and commercial aviation. With different looms available, we can produce a wide range of high quality aircraft carpets.

All qualities meet the FAA/FAR directions as well as ABD 0031/BMS 7238/39 standards. Our qualities are made of the finest wool including a Bekinox anti static fiber to reduce the electrostatic charge.

The production includes both 1,2 and 3 frame looppile products and also cut and loop various constructions. Normal standard carpets with even and / or stranded threads are made as well. B.I.C.-carpets has advanced CAD design facilities, so the customer gets exclusive pattern, colours and carpets.

The recognition for these important basic values was ensured when the company obtained the ISO 9100 certificate, a quality label that gives the company's employees recognition for their design, development, production and sales skills.



Discover our range of ultra light weight aircraft carpet

A new ultra light weight carpet for aircraft is being introduced.

B.I.C.- Carpets sets the first steps with a revolutionary carpet. This carpet boast a significant difference in weight compared to standard carpet. They are made of **eco friendly yarns (100% recycled content)** while still ensuring optimal technical performance and excellent durability.

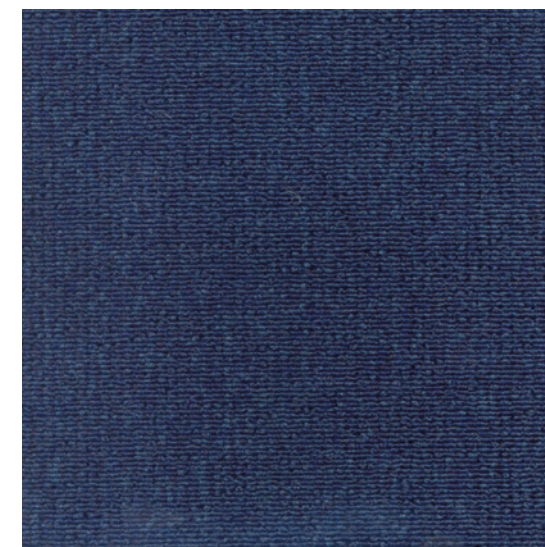
B.I.C. is aware of the tough competition and has stepped up the game and made the carpets look different to traditional ones and increased the strength and durability of its products. "We have run methods of testing for burning behaviour, anti static, colour and surface appearance to determine changes in appearance of textile floor coverings. We found besides ultra light weight coverings, which are non - carpet, our very durable carpets can deal with tough stains as well as absorb dirt and dust. We have worked hard in developing these new programs and look to help airlines that care about fuel burning savings resulting in lower CO2 emissions and that focus on cost efficiency by saving fuel."

By using BIC Ultra Light Weight aircraft carpet will airlines **not only save money on fuel but also on the cost of purchasing carpet:**

1. Fuel saving cost: The weight reduction of the Bic carpet compared to the average aviation carpet is 700 gr/ m2. Considering that every kg cost about €120 in fuel per year will the Bic carpet result in the following fuel savings per year : B737 / A320 : +/- 104 sq/m2 of carpet x 0,7 kg weight saving x €100 = € 7.280 per aircraft per year in fuel savings.

2. Savings in carpet cost: The Bic Ultra Light Weight carpet is about 25 % cheaper compared to traditional aviation carpet.

B.I.C.-Carpets is an ISO 9100 certified company.



AC 1433N



AC 1446N

Technical data

Pile composition

100% eco nylon (recycled content) and antistatic fibres

Backing

PES/cotton + synthetic latex, flame retardant

Pile weight

± 510 g/sqm ISO 8543-EN 1307

Total weight

± 1200 g/sqm ISO 8543-EN 1307

Pile height

± 2 mm ISO 1766

Total height

± 4 mm ISO 1765

Knots

± 144.000 /sqm ISO 1763

Construction

1-frame carpet ISO 2424

Standard width

200 cm - special width on request ISO 3018



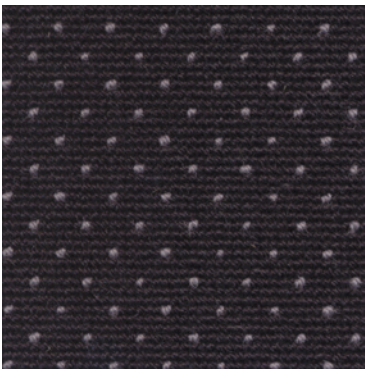
High quality light weight aircraft carpet

High Quality Aircraft Carpet : extra durability resulting in fewer changes of carpet in the cabin...

These products are developed with special attention to durability, design and color to ensure a top quality carpet. **We made the carpet stronger without increasing the total weight of the product.** We created the best of both worlds combining the comfort of wool and the durability of nylon.

Airlines will make considerable savings because they need less carpet to purchase and to install. Furthermore will there be less carpet to dispose of and will more passengers enjoy a clean and nice carpet.

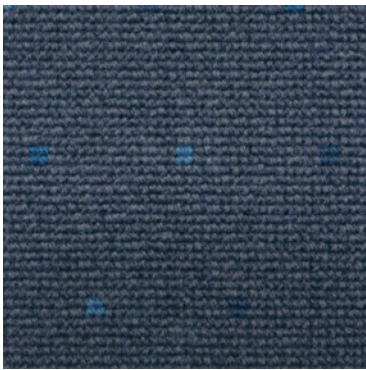
B.I.C.-Carpets is an ISO 9100 certified company.



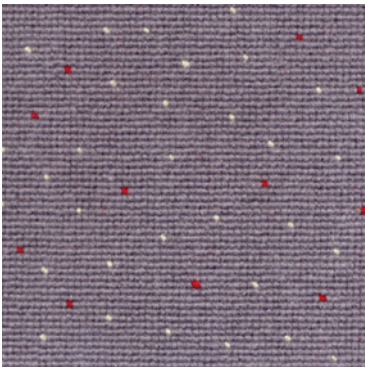
AC 1130



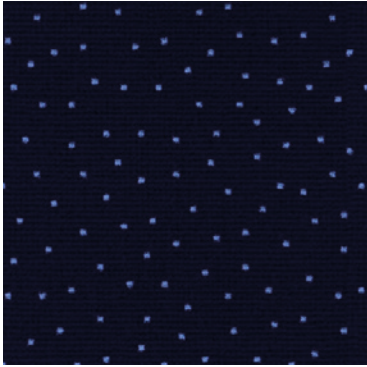
AC 1165



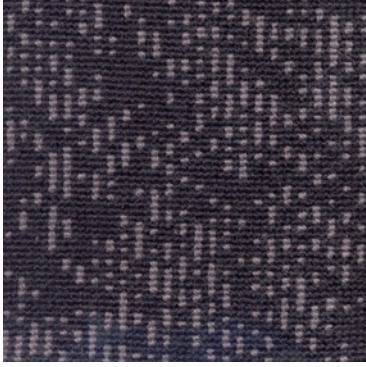
AC 1154



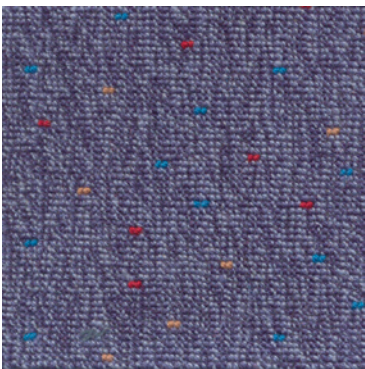
AC 1201



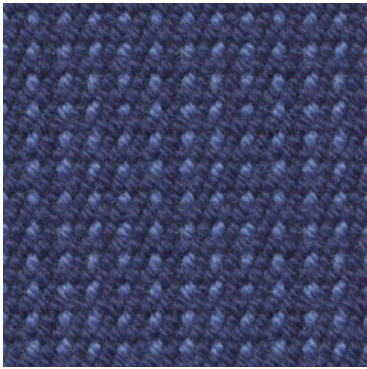
AC 1231



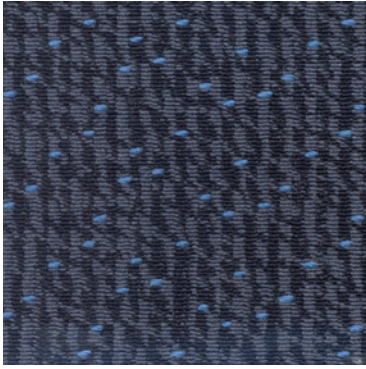
AC 1318



AC 1223A



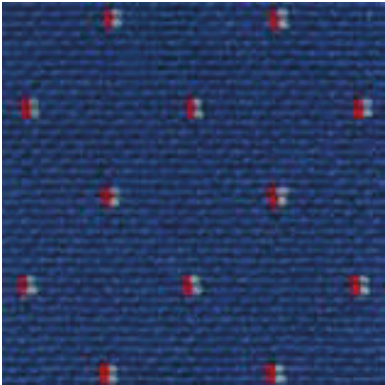
AC 1238



AC 1445N

Technical data

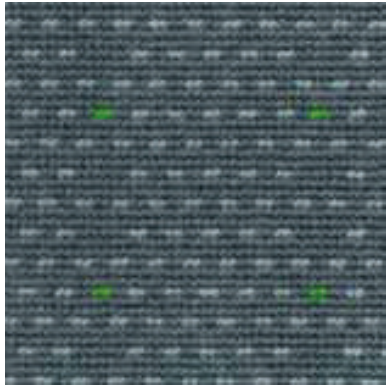
Pile composition 70% eco nylon (recycled content) and 30 % wool - antistatic fibres		Pile height ± 2 mm	ISO 1766
Backing PES/cotton + synthetic latex, flame retardant		Total height ± 4 mm	ISO 1765
Pile weight ± 721 g/sqm	ISO 8543-EN 1307	Knots ± 144.000/sqm	ISO 1763
Total weight ± 1495 g/sqm	ISO 8543-EN 1307	Construction 2-frame woven carpet	ISO 2424
		Standard width 200 cm - special width on request	ISO 3018



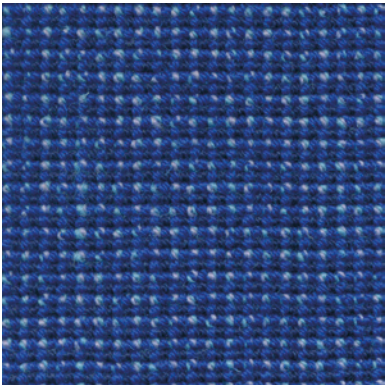
AC 1019



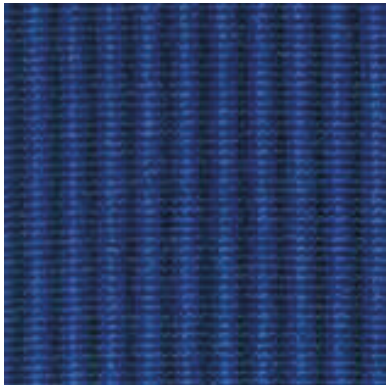
AC 1021



AC 1024



AC 1026



AC 1028



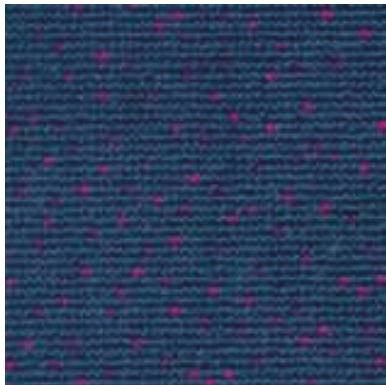
AC 1031



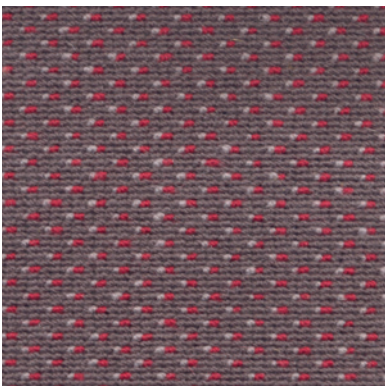
AC 1033



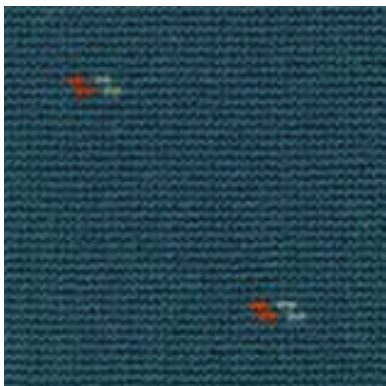
AC 1036



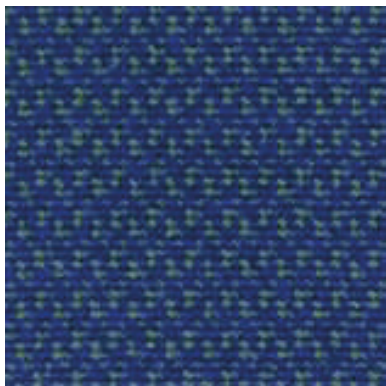
AC 1037



AC 1039

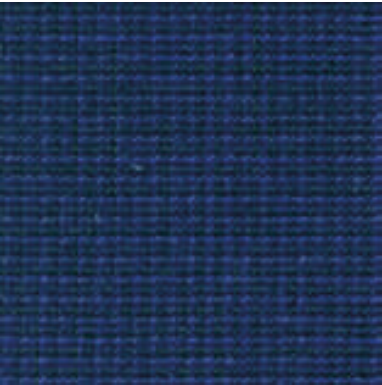


AC 1040



AC 1041

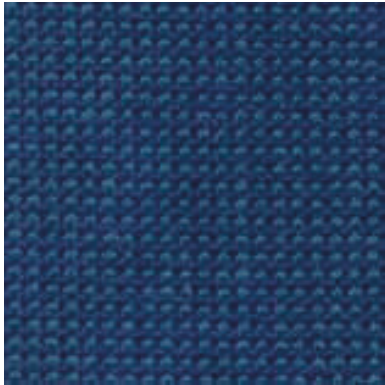
AIRCRAFT REALITY



AC 1043



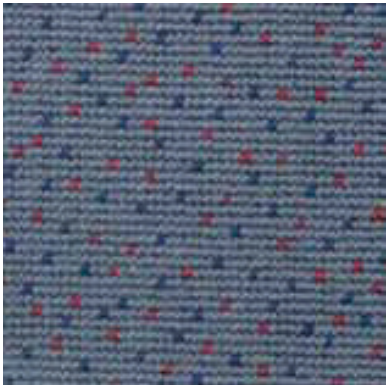
AC 1043d



AC 1044



AC 1047



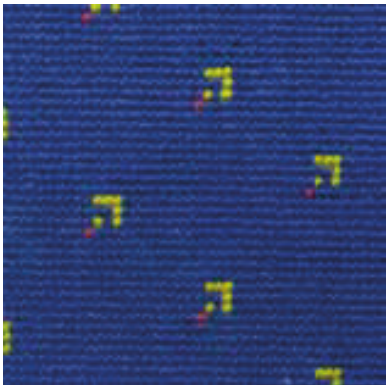
AC 1048



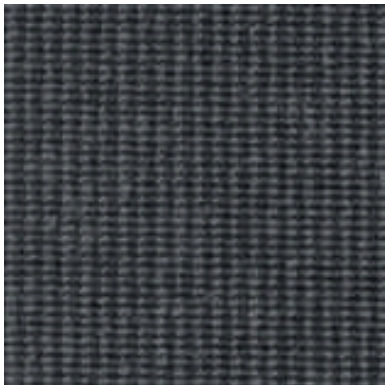
AC 1054



AC 1059



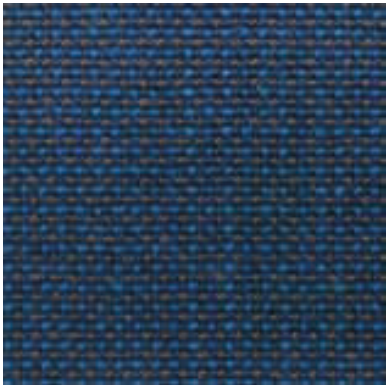
AC 1060



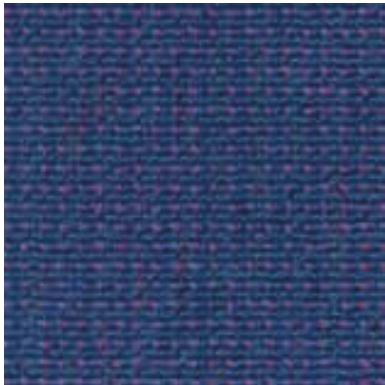
AC 1062



AC 1066



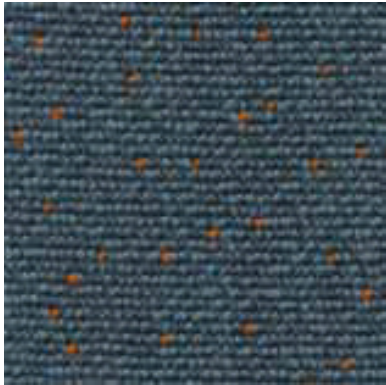
AC 1075



AC 1077



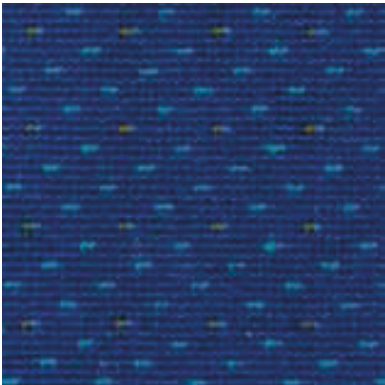
AC 1083



AC 1084



AC 1085



AC 1086



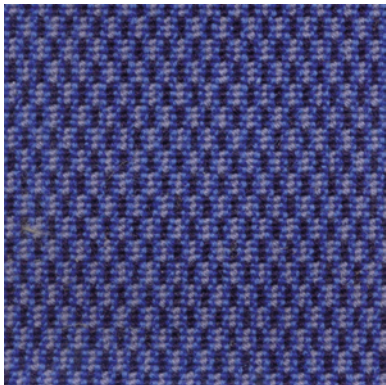
AC 1088



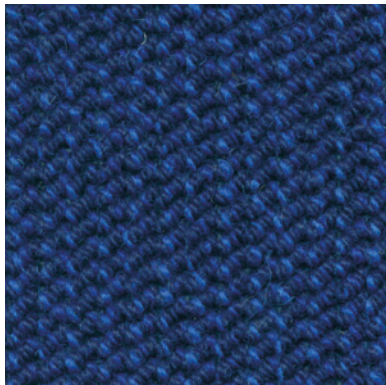
AC 1094



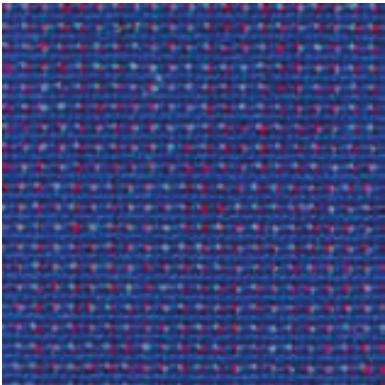
AC 1095



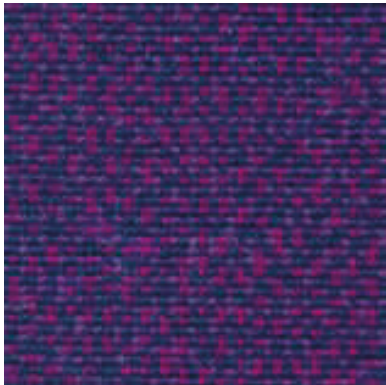
AC 1098



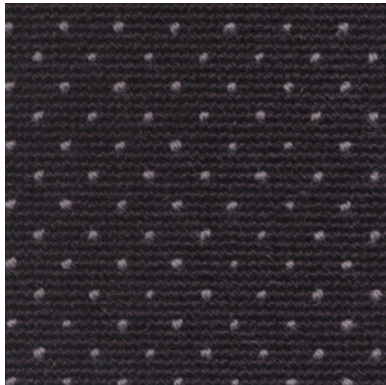
AC 1100



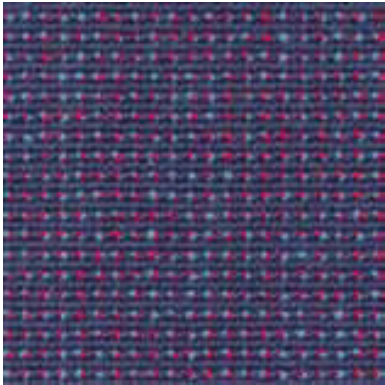
AC 1121



AC 1128



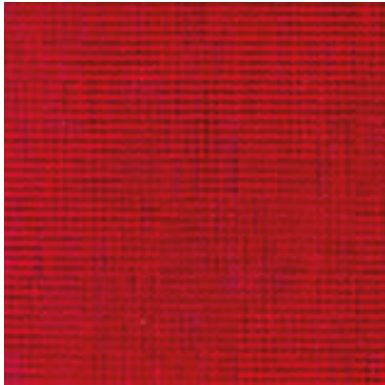
AC 1130



AC 1131



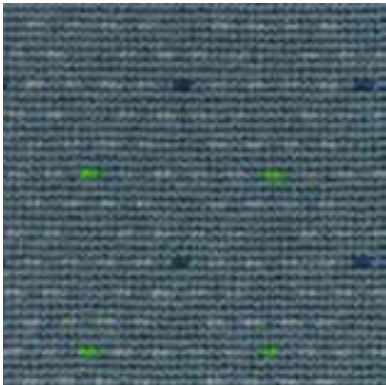
AC 1132



AC 1135



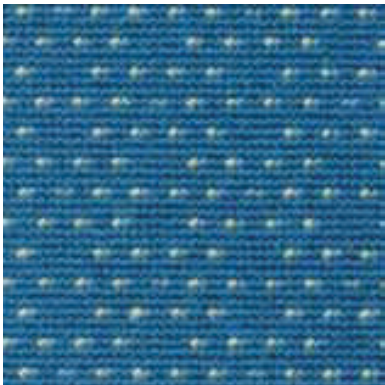
AC 1136



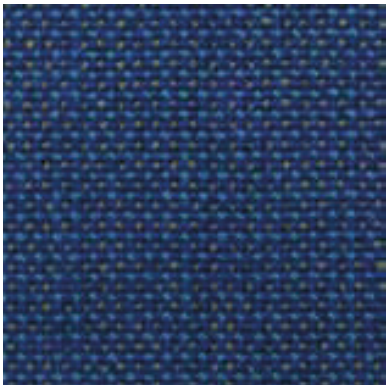
AC 1138



AC 1139



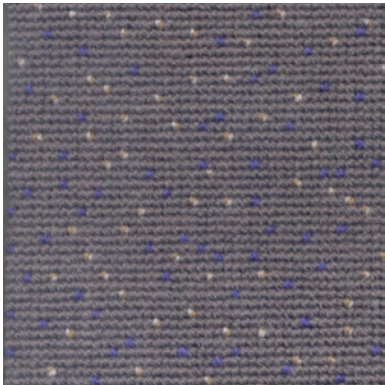
AC 1140



AC 1141



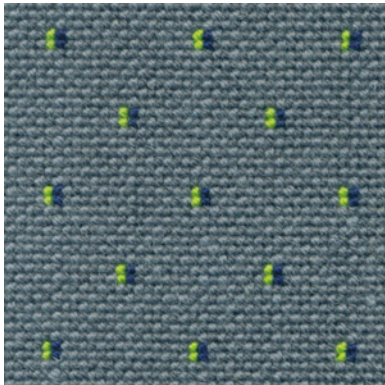
AC 1142



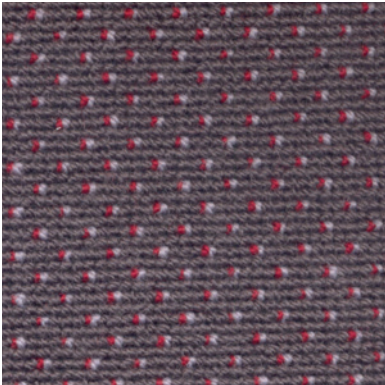
AC 1146



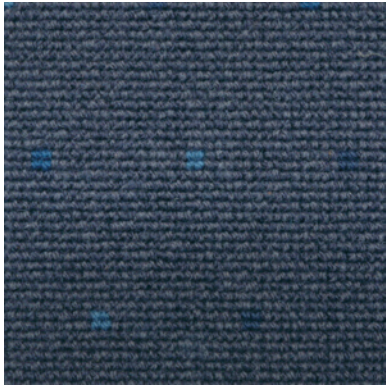
AC 1147



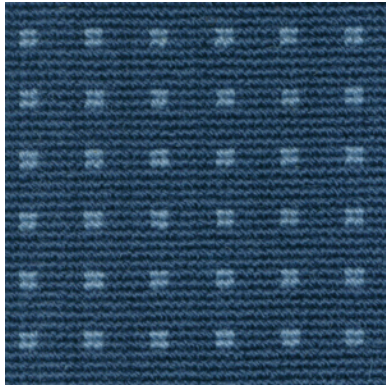
AC 1151



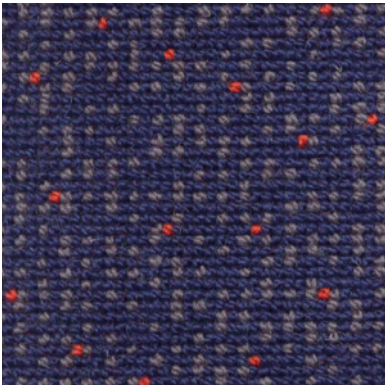
AC 1153



AC 1154



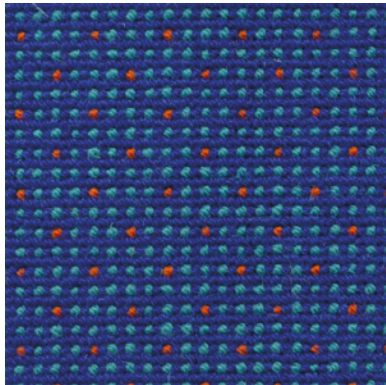
AC 1156



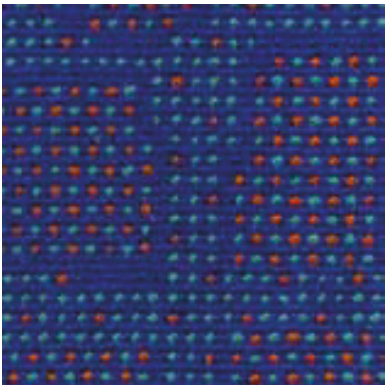
AC 1156b



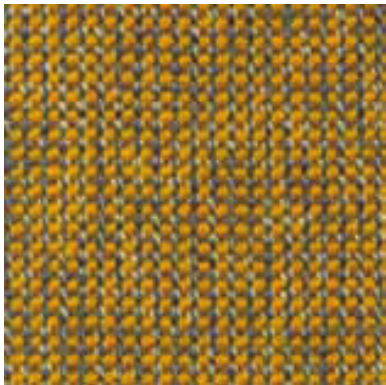
AC 1158



AC 1160



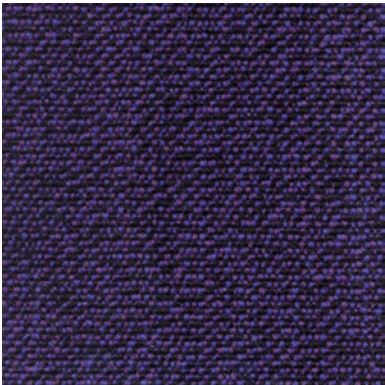
AC 1161



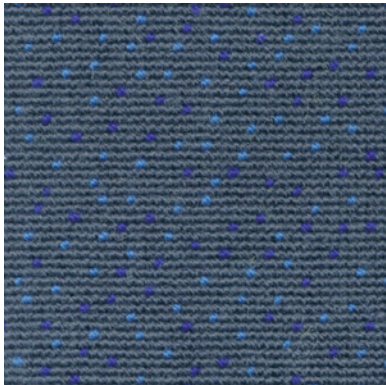
AC 1163



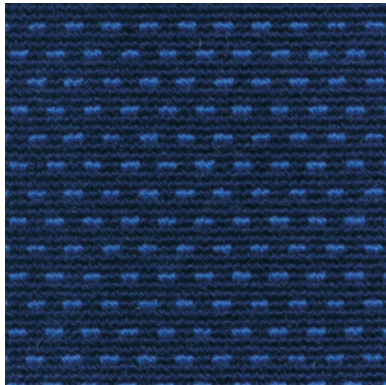
AC 1165



AC 1166



AC 1168



AC 1169



AC 1170



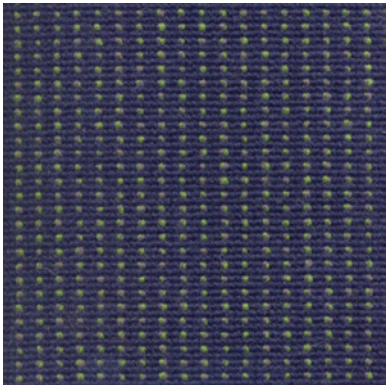
AC 1185



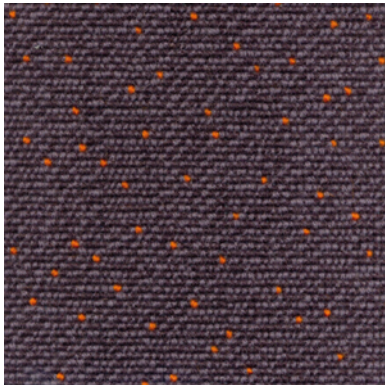
AC 1192



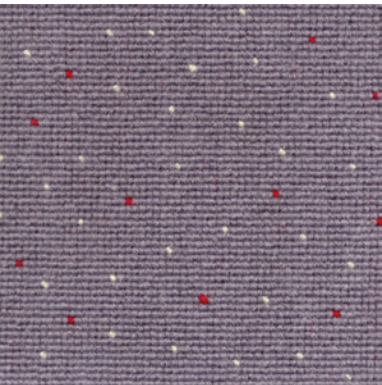
AC 1194



AC 1195



AC 1199



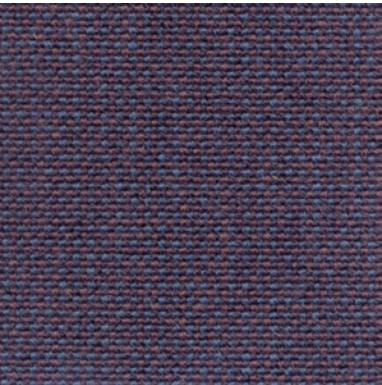
AC 1201



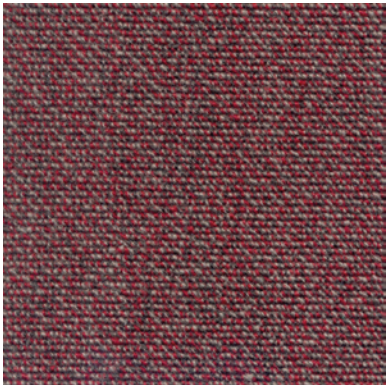
AC 1205



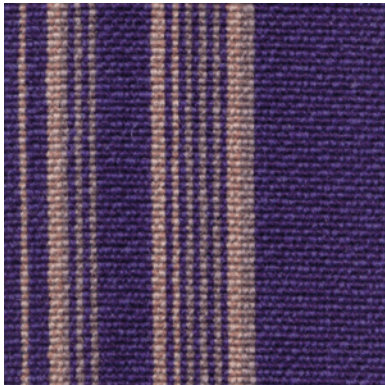
AC 1207



AC 1208



AC 1209



AC 1215



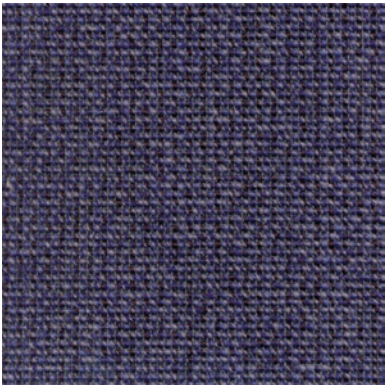
AC 1216



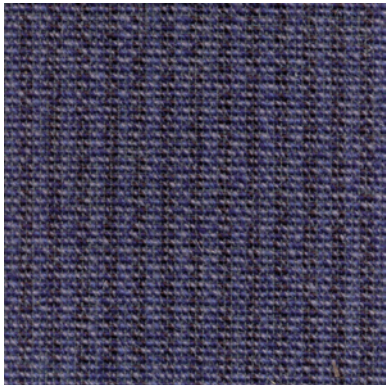
AC 1217



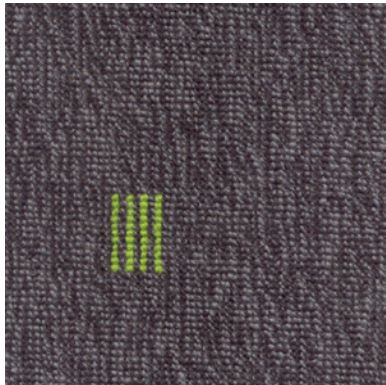
AC 1218



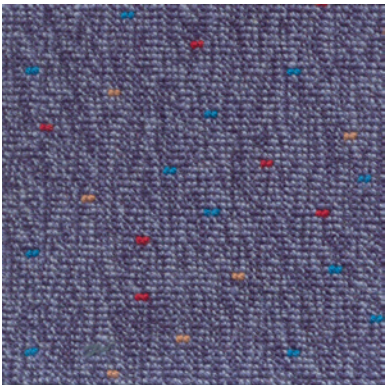
AC 1220



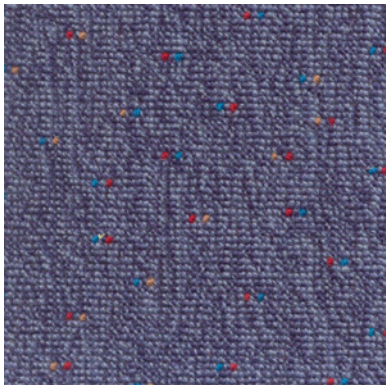
AC 1221



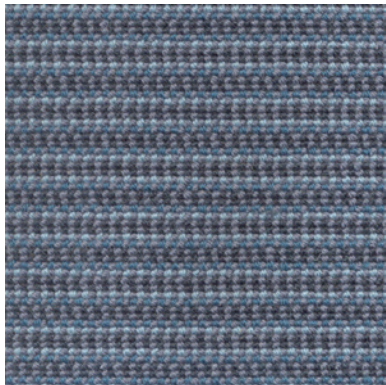
AC 1222



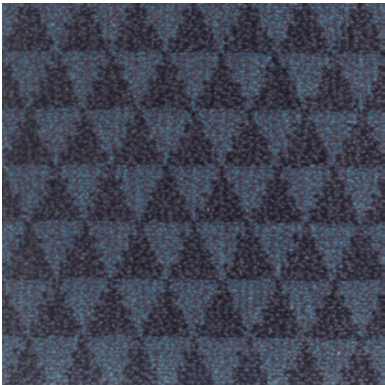
AC 1223a



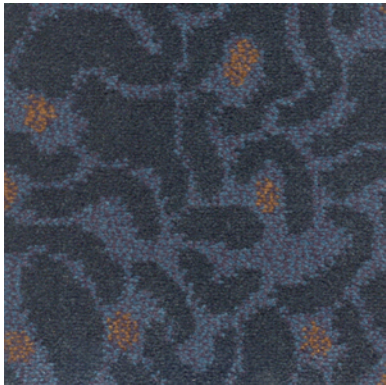
AC 1223b



AC 1224



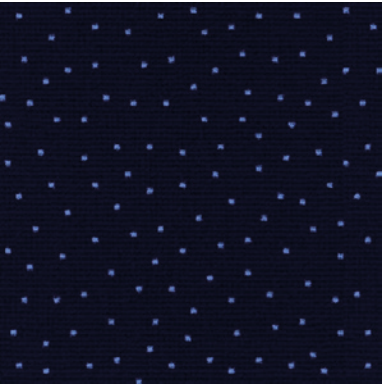
AC 1225



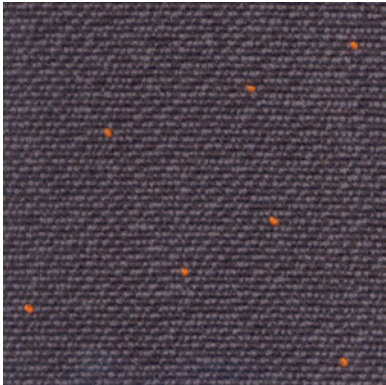
AC 1226



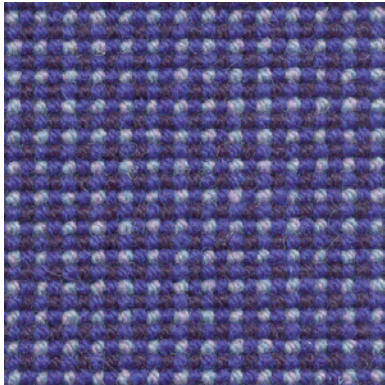
AC 1230



AC 1231



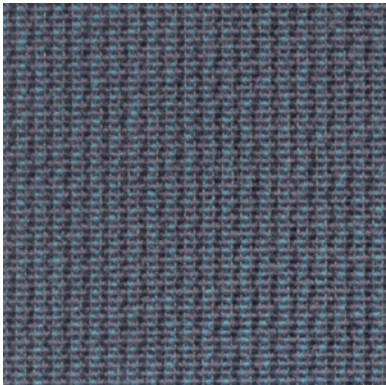
AC 1232



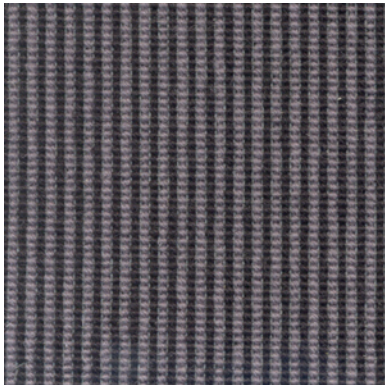
AC 1236



AC 1238



AC 1242



AC 1243



AC 1244



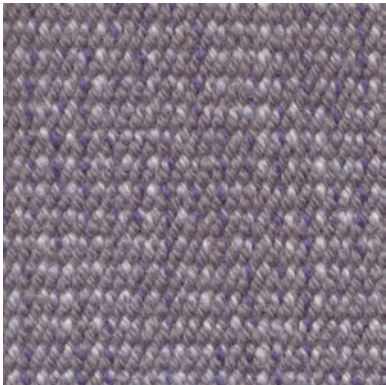
AC 1245



AC 1246



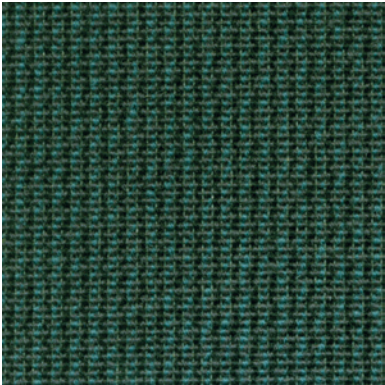
AC 1247



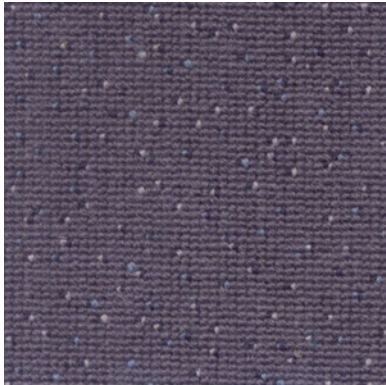
AC 1267



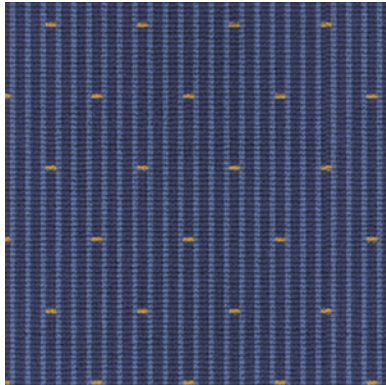
AC 1269



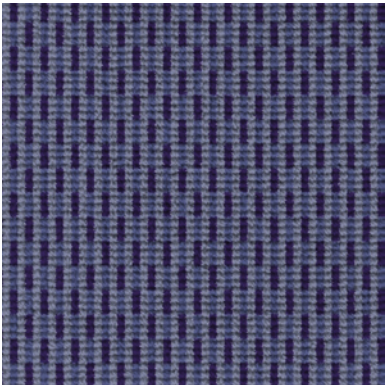
AC 1270



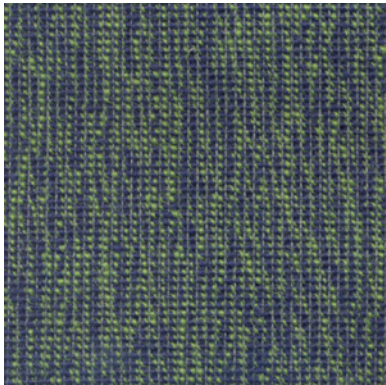
AC 1274



AC 1276



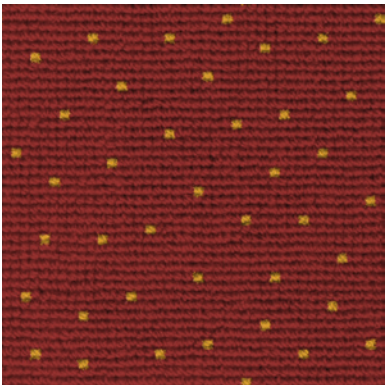
AC 1277



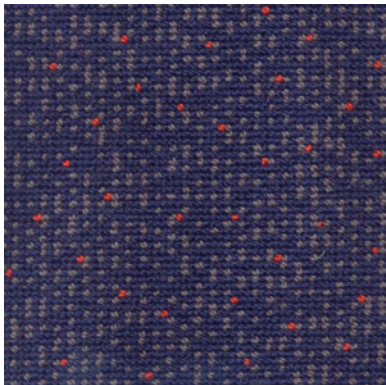
AC 1278



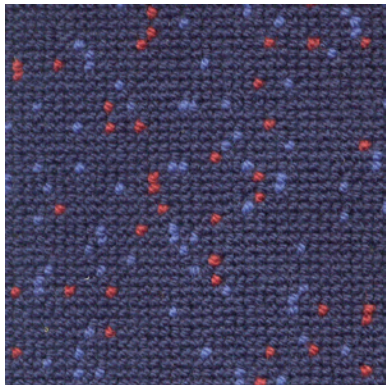
AC 1280



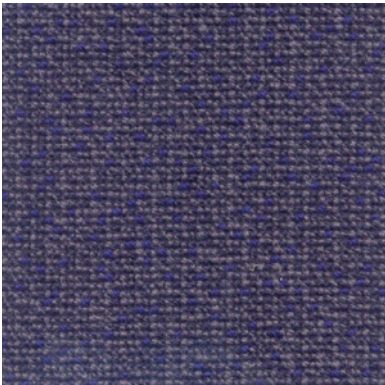
AC 1282



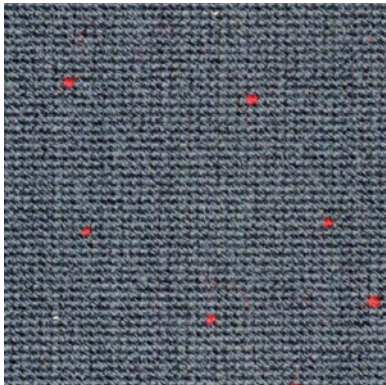
AC 1283



AC 1286



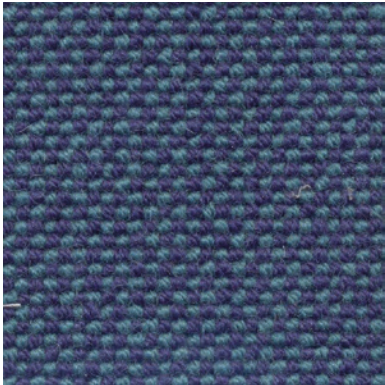
AC 1363



AC 1367



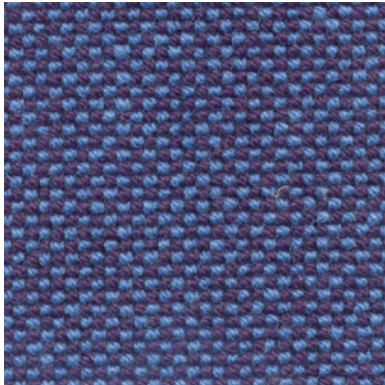
AC 1371



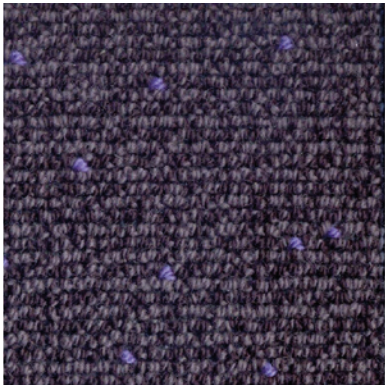
AC 1372



AC 1374



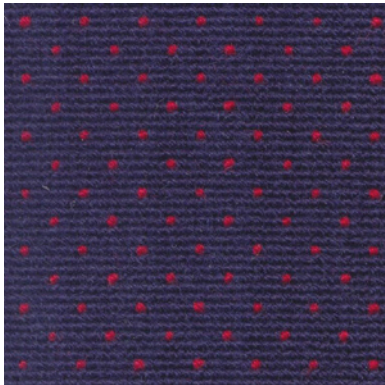
AC 1375



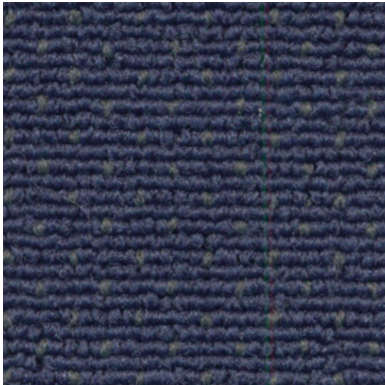
AC 1382



AC 1397



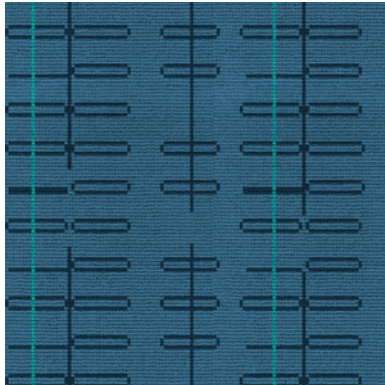
AC 1398



AC 1400



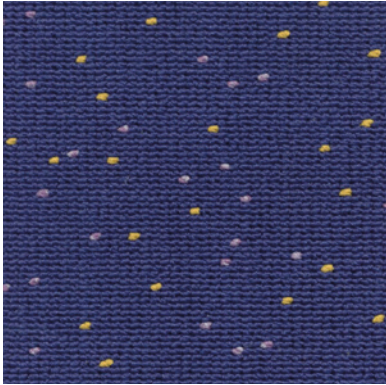
AC 1404



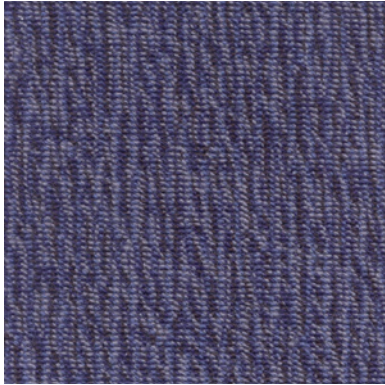
AC 1405



AC 1406



AC 1407



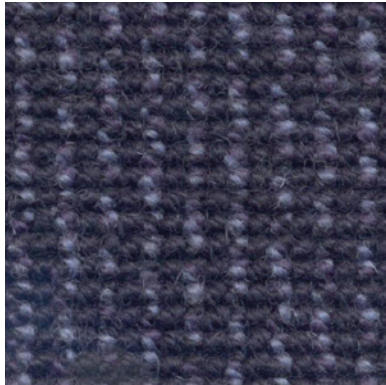
AC 1408



AC 1410



AC 1411



AC 1412

Airlines using BIC Carpets

- ◇ Easyjet UK
- ◇ Nordwind Airlines
- ◇ Titan UK
- ◇ Kingfisher Airways
- ◇ Thomsonfly UK
- ◇ Corendon
- ◇ Corsair France
- ◇ Blue Jet
- ◇ XL Airways France
- ◇ Abelag
- ◇ Aigle Azur France
- ◇ Mahan Air
- ◇ Brussels Airlines Belgium
- ◇ Ukraine International Airlines
- ◇ Thomas Cook Belgium
- ◇ FL technics
- ◇ CSA Czech
- ◇ Aircraft Industries a.s.
- ◇ Travel Service Czech
- ◇ Aseman Airlines
- ◇ Ut Air Ukraine
- ◇ Nouvelair
- ◇ Kuwait Airways
- ◇ Syphax Airlines
- ◇ Biman Bangladesh
- ◇ Air Niugini
- ◇ Sama Saudi
- ◇ Rossya
- ◇ Tunisair
- ◇ Jetairfly
- ◇ Tap Portugal
- ◇ Sky Airlines
- ◇ Cobham Aviation
- ◇ Iranair
- ◇ MG Air
- ◇ Pobeda

REFERENCES



Certificates

It's very important to invest in Quality Management and Quality Control.

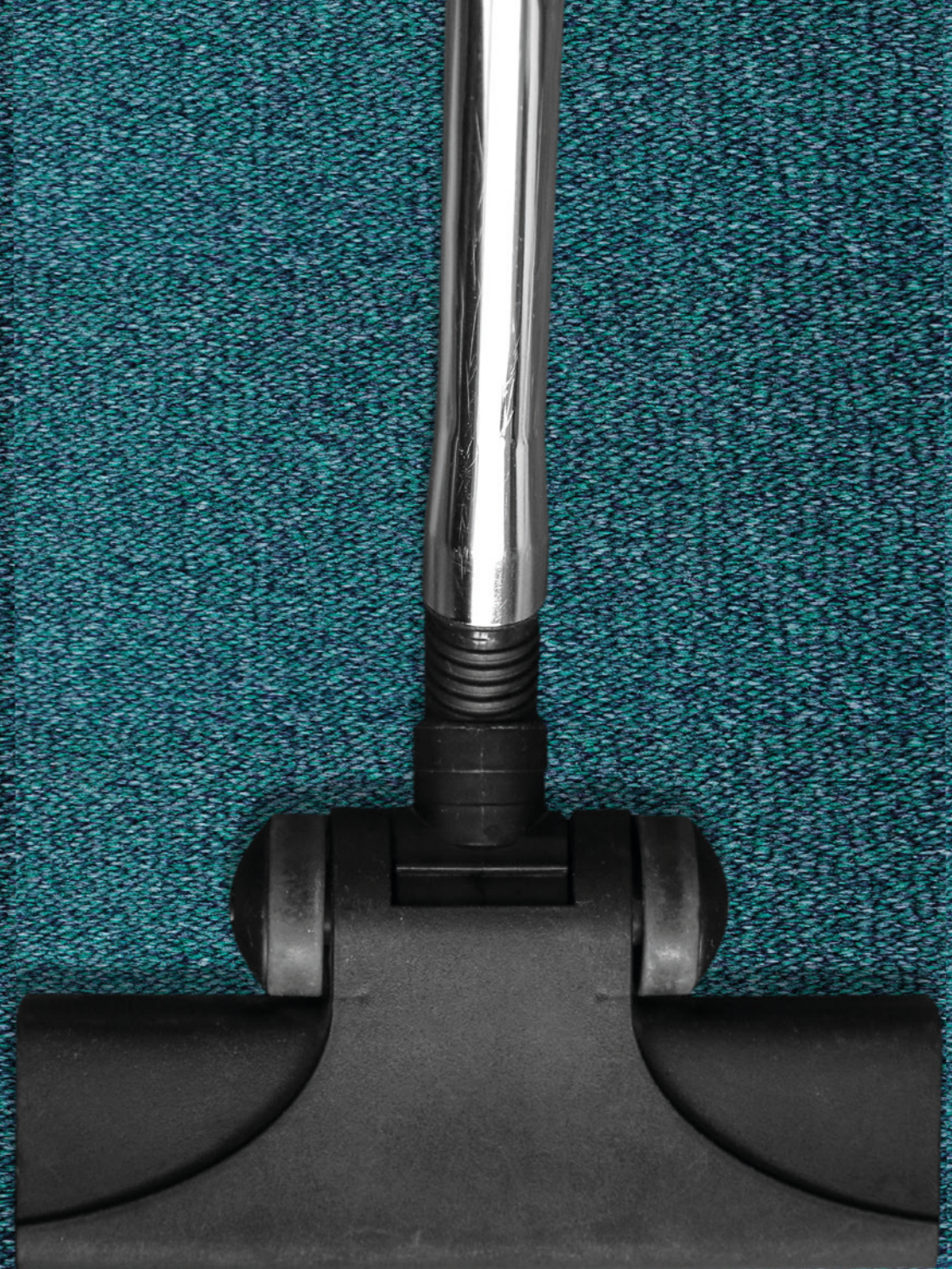
At B.I.C.-Carpets we invest a lot in continuous research.
We're very proud to announce that B.I.C.-Carpets holds the ISO 9100 certificate.



Interested to be on our reference list?

Sales Director Aircraft,

Philip Dermaut



CARPET CARE

Recommended care and maintenance

The longer carpet lasts the less it costs...

Carpet performance starts with the right carpet selection. Proper maintenance for aircraft carpet will extend the life of the floor and provide significant savings in carpet replacement costs including labor for installation and removal, installation supplies, and fabrication of carpet parts. To be truly cost-effective, maintenance must be carried out with systematic frequency over the life of the carpet. Ironically, today's carpets are engineered to disguise soils and stains. This sometimes masks the need to vacuum and clean on a regular basis. A consistent and effective maintenance program can dramatically extend the life of your carpet. Other important factors for a consistent and effective maintenance program include:

Clean air: The cleaner the carpet, the better the air. Properly maintained carpet can act as a filter, improving the air in the aircraft cabin, resulting in better customer experience.

A good reflection on your airline: An effective maintenance program will protect your carpet investment. When your carpet looks good it's a positive reflection on your company.

Keys to effective maintenance

Preventive maintenance: Dirt is everywhere. Keeping it out of the aircraft is easier and less expensive than removing it.

Vacuuming: Regular vacuuming is the most important part of any maintenance program.

Spot removal: Spots are inevitable, but they don't have to be permanent. Remove a spill quickly and there is less chance it will become a stain.

Restorative/deep cleaning: No matter how conscientiously you work at it, daily maintenance will still leave some soil behind. Regularly scheduled deep cleaning, using hot water extraction, is most effective at removing embedded abrasive soil.

Recommended Cleaning Process for BIC Aircraft Carpet

1. Vacuum

- ◇ Thoroughly vacuum the carpet removing all loose/dry soil.
- ◇ A slow pass against the carpet pile is more effective than several quick strokes.
- ◇ Heavy traffic areas may require multiple passes (forward and backward) to sufficiently extract embedded soil.
- ◇ A vacuum brush will open up the tufts.
- ◇ Agitation will loosen the soil.
- ◇ Slow movement allows time for air to circulate through the face yarn and extract soil.

2. Spot Removal

- ◇ Inspect the carpet for spots such as gum, tar, grease, lipstick and other oily spots.
- ◇ Apply a Carpet Spot Remover.
- ◇ Do not overuse and follow up with a full carpet cleaning of the area.

3. Hot Water Extraction

- ◇ Use a detergent free extraction cleaner specially formulated for the hot water extraction process.
- ◇ Truck mounted extraction cleaners have higher heat, water pressure, and vacuum than portable units and will help the carpet clean faster and dry quicker. Truck mounts also allows spots such as gum to release easier from the carpet with less work. As with most things more is not better. While a truck mount has much higher capabilities for water pressure, 300 psi will flush carpet well without over wetting the backing and extending dry time. The ease of set up and tear down of a truck mount will cut production time in half.
- ◇ Portable extraction units can be used as well. Take a look at www.steambrite.com

Care of wool carpet

- ◇ The most important elements of maintaining your wool carpet investment includes the steps of thorough vacuuming, interim dry cleaning in high traffic areas and deep cleaning with warm (not hot) water.
- ◇ Vacuuming of wool loop pile constructions, a suction only vacuum should be used to prevent fuzzing.
- ◇ Vacuuming of wool cut pile carpets is most effective with the use of a rotary beater bar/brush.
- ◇ Periodic deep cleaning is necessary to remove imbedded soils. There are many cleaning agents, both dry and wet, that are suitable for use on wool carpet, make sure to use a detergent free extraction cleaner approved by the Woolsafe Organization (www.woolsafe.org) as safe for wool carpeting.
- ◇ Do not apply stain repellent treatments that contain silicone because they will significantly accelerate soiling.
- ◇ Care must be taken to not over-wet wool carpet.
- ◇ Immediate attention to spills will prevent the development of a stain. Remove the solid spill and use a white absorbent cloth/towel to absorb all of the spilled substance. Apply spot cleaning agent sparingly as defined in the spot removal section of this maintenance guide. Work from the edge towards the center of the spill. Never rub, as it may spread the stain.
- ◇ Test all spot and cleaning agents in an inconspicuous area to be sure it will not remove the carpet color.

Additional maintenance factors

Many factors govern a carpet's lifespan and appearance; from the fiber and construction to the way the carpet is installed. However, none pay more dividends than proper care. The small amount of time that it takes to implement a well-planned maintenance program can dramatically extend the life of your carpet.

And remember...the longer it lasts, the less it costs.

Color, pattern and construction

Color, pattern and construction all help determine how well your aircraft carpeting stands up to daily use. The best carpet selection takes both performance and aesthetics into account. **No maintenance program can overcome a poor carpet choice.** Improper color selection could increase your maintenance costs. Observe the appearance of the carpet for a period of time. If soiling is apparent, increase the frequency of vacuum cleaning in that area.



BELGIAN INTERNATIONAL CARPET N.V./S.A

Vlamingstraat 12 | 8560 Wevelgem Belgium

T +32 56 23 54 10 | F +32 56 21 54 14 | sales@bic-carpets.be | www.bic-carpets.com



www.bic-carpets.com