

# florence

1081.01 - 1081.30



collection

wallcovering

03

vinyl

description

rich silk look available in multicolour or  
tone-on-tone

composition

vinyl finishing coat on a woven cotton  
backing

width

± 130 cm, ± 51 inches

weight

± 350 gr/m<sup>2</sup>, ± 15 oz/yd<sup>1</sup>

sound absorption

ISO 354, alphaw 0.10

flame retardancy

EN 13501, B s1 d0

IMO 2010 FTP part 2-5

ASTM E84, A

NFPA 286

colorfastness to light

ISO 105-B02

8 (scale 1-8)

CCC-W-408D



vinyl COMMITTED TO  
SUSTAINABLE DEVELOPMENT

CE EN 15102:2007+A1:2011  
12  
1104/305-2011 (18-11-2015)  
wallcovering

REACTION TO FIRE CLASS: EN 13501-1  
REACTION OF FORMALDEHYDE: EN 12149  
RELEASE OF HEAVY METALS: EN 12149  
RELEASE OF VINYL CHLORIDE MONOMER: EN 12149



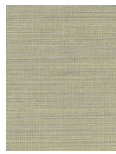
# florence

1081.01 - 1081.30

---



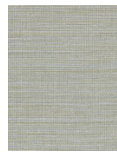
1081.01



1081.02



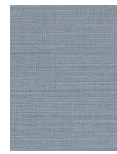
1081.03



1081.04



1081.05



1081.06



1081.07



1081.08



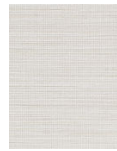
1081.09



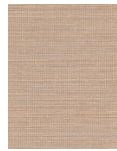
1081.10



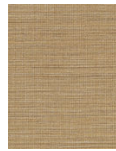
1081.11



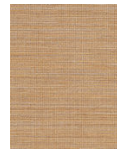
1081.12



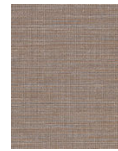
1081.13



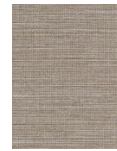
1081.14



1081.15



1081.16



1081.17



1081.18



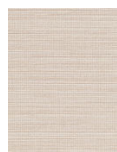
1081.19



1081.20



1081.21



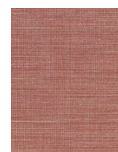
1081.22



1081.23



1081.24



1081.25



1081.26



1081.27



1081.28



1081.29



1081.30