

ROLLS FITTING INSTRUCTIONS



1. General Information

The 2tec2 floor covering needs to be installed by a professional installer.

LTA cannot be held responsible for poor workmanship or problems due to improper installation.

2. Subfloor Preparation

An appropriate preparation is essential for a perfect and long lasting result. The floor has to be clean, crack-free and greaseproof, pressure resistant and permanently dry. The rolls can not be fitted on old textile subfloors.

2.1. New constructions

1. Treat the surface with a primer.
2. 24 hours prior to installation, apply a self levelling compound. This compound is then grinded and vacuum cleaned. Take heed, depending on the construction of the floor, of the allowed residual humidity and possible rising moisture.
3. If necessary, apply a damp screen, as a moisture barrier.

2.2. Renovation projects

1. All remainders of the previous floor covering must be removed carefully.
2. Whenever necessary, cracks and clefts should be filled before the floor is treated with a bi-component primer.
3. Check sub floor on possible rising moisture and, if necessary, apply a damp screen.
4. Apply afterwards a self levelling compound. Levelled and grinded surfaces are essential for perfect an optical result.

3. Installing 2tec2

3.1. Stocking the rolls and material check

In order not to damage the rolls, lay them on a flat floor with no weights on the rolls. Make sure the 2tec2 reference matches the order and check you have identical batch numbers. These are specified on each roll tag. Otherwise notify the manufacturer before proceeding with installation.

3.2. Acclimatisation

The following indoor climate conditions are to be met: a floor temperature of at least 15° C (60°F), a room temperature between 18°C (65°F) and 25°C (77°F) and a relative humidity of the air not to exceed 75% (min 55%). 24 hours prior installing the rolls, you need to roll the lanes open. Overlap these for about 5 cm (1,97 ") and check for any visual defects at this stage and notify the manufacturer before installation. Make sure to roll out the lanes by following consecutive roll numbers. Always lay all the rolls in the same direction as the printed arrows on the back.

3.3. Installation

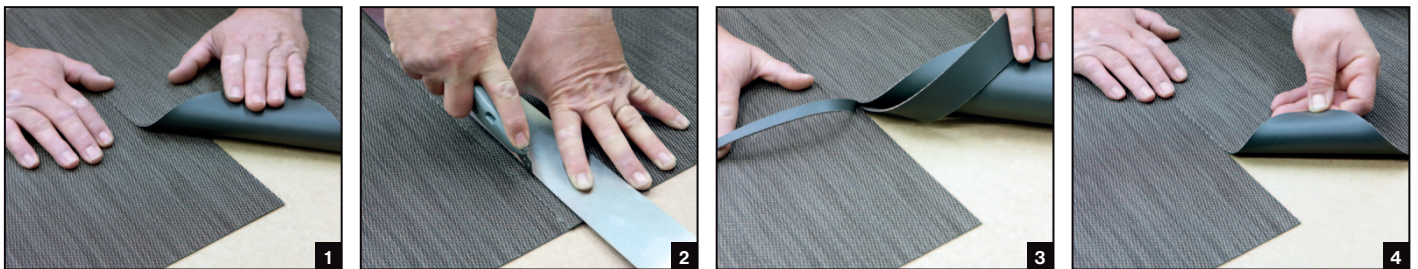
3.3.1. Seams

The number of seams should be reduced to a minimum. In areas with heavy and directed traffic, traffic flow should be along rather than across the seams. Ensure that no seams are located near entrances. Avoid crosscut seams and use transition profiles if this can not be prevented. For watertight applications cold welding is required. Use a cold welding system of Werner Muller brand type A.

2TEC2 ROLLS COME IN 3 TYPES OF DESIGNS:

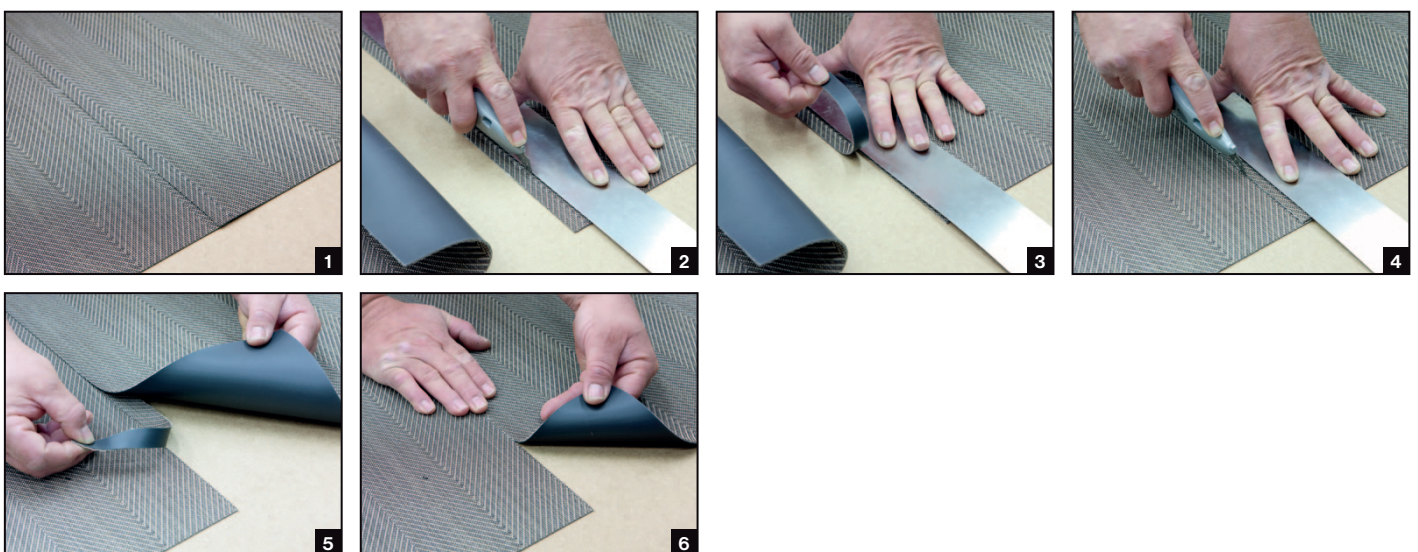
1. ALL OVER PATTERN

All seams of the all over designs, as the new basic design (Rebel, Iron, Lava, Bazalt, Gritstone, Conch, Canyon, Sponge, Flint, Opal, Dolomite, Topaz, Bister) or panama design (Limestone, Desert, Burlwood) can be double cut with a straight edge. The lanes are overlapped in a parallel way before cutting.



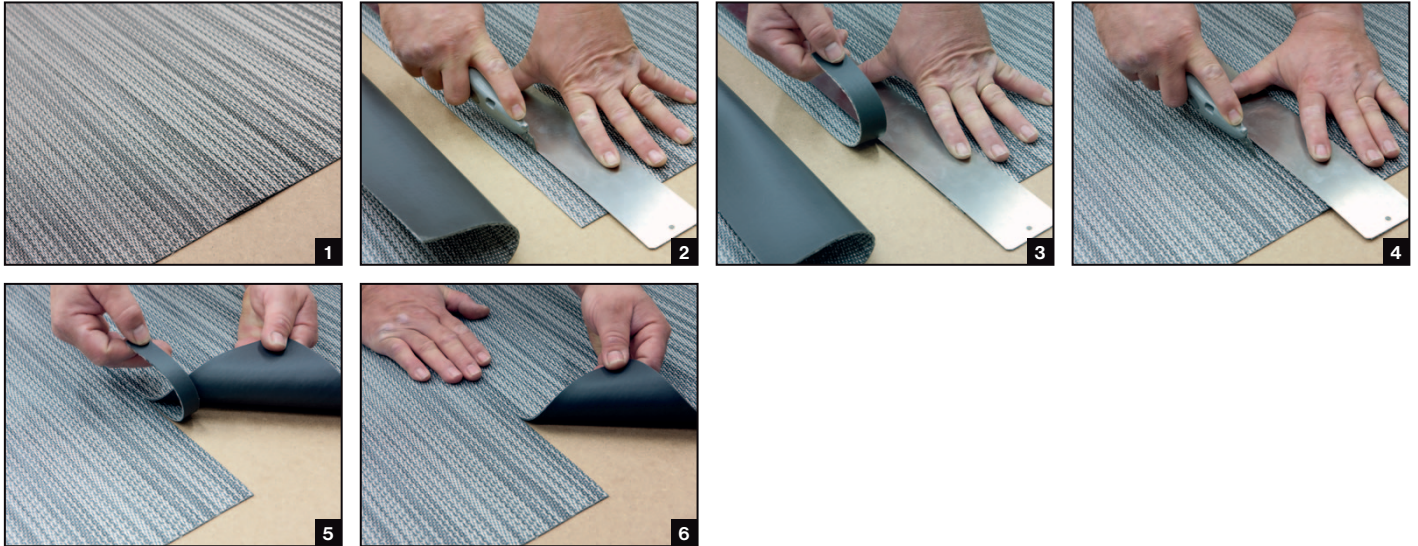
2. HERRINGBONE PATTERN

To cut the seams of a herring bone design (Steel, Sandstone, Dune, Oyster, Ammonite) you need to cut two mm (or 0.08 ") next to tip of the herringbone with a straight edge. The first lane is laid over the second lane and serves, after matching the design, as a guide to cut the second strip.



3. STRIPE PATTERN

To cut the seams of a stripe design (Quartz and Diamond) you need to cut two mm (or 0.08 ") next to the tip of the design with a straight edge. The first lane is laid over the second lane and serves, after matching the design, as a guide to cut the second strip.



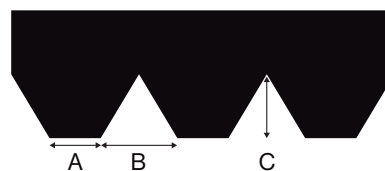
2tec2 is a woven product with yarns in which the core consists of white glassfibers. These fibers are sometimes visible at the seam after installation. Remove these by rubbing the fibers repetitively with a damp cloth.

3.3.1. Adhesive application

The only certified glue is Multi-Coll adhesive from Wulff GmbH. Any other glue will not ensure closed seams on the long term and claims will not be covered by our warranty. Since Multi-coll is a wet bed adhesive, the 2tec2 needs to be laid within 10'-15' into the adhesive without pre-drying. Attention, if the glue had too much time to dry out before installing the carpet the adhesion will not be optimal and, this may result on the long term, in open seams and premature wear. The adhesive needs to be applied by using a notched adhesive spreader TBK A2 in an amount of ca. 350 gr/ sqm or 1.14 oz/ sq ft.



Picture 4 - TBK A2 Spatula



A = Tooth distance = 1,2 mm = 0.047 "
 B = Tooth width = 1,8 mm = 0.070 "
 C = Nose depth = 1,5 mm = 0.059 "

The Multi-Coll adhesive is available through Le Tissage D'Arcade or directly from www.wulff-gmbh.de
 For a local agent please contact info@wulff-gmbh.de

3.4. Lane application

Fold the lanes back over half of their length. Draw a line (*picture 5*) as start for the adhesive application. Roll the lanes out into the adhesive bed and rub with a cork beam (or any other unsharp material) from the center to the edges to remove any blister or air bubbles before the adhesive bonds. Ensure you have perfectly flat seams.



picture 5 - How to start installation of the rolls

Do not allow any traffic for the next 24 hours – the glue should be completely dry and hardened.

4. General Tips

- 2tec2 rolls are suitable for stairs; if it is laid on stairs it is advisable to use stair nosing.
- If castor chairs are used it is necessary to use hard castors in polyamide. The castor wheels should have a minimum diameter of 50mm and be at least 20mm wide.
- Rubber materials (e.g. car tires) can affect the colour of 2tec2 in case of long term contact. It is therefore advisable to use pads in case of continuous contact with rubber materials.
- For outdoor applications, we advise to use epoxy adhesives only.
- 2tec2 is suitable for floor heating.
- Once the installation has been completed the surface should be protected particularly if the area is to be used by other trades during final finishing.

For any questions in that respect our Technical Services Department at LTA will be pleased to assist you.

FAILURE TO ADHERE TO THESE FITTING INSTRUCTIONS WILL VOID ANY CLAIMS FOR FULL OR PARTIAL REFUND BY LE TISSAGE D'ARCADE.