

# PARK

## TECHNICAL SPECIFICATION

Manufacturing method	: Design tufted
Pile type	: Loop pile
Pile fibre	: 100% polyamide 6 solution-dyed Econyl
Gauge	: 1/10"
Pile weight	: 620 gr/m <sup>2</sup>
Pile height	: 3.0 - 6.0 mm
Total weight	: 4200 gr/m <sup>2</sup>
Total thickness	: 5.8 - 8.8 mm
Tuft density	: 177.750 m <sup>2</sup>
Tile size	: 50 x 50 cm
Backing	: Polyflex
Tiles per box	: 20

## PERFORMANCE

Use classification	: 23 + 33
Caster chair test	EN 985 : A, intensive use
Abrasion	EN 1963 : Pass
Vettermann test	EN 1471 : Pass
Dimensional stability	EN 986 : Pass
Thermal isolation	ISO 8302 : 0.079 m <sup>2</sup> K/W
Sound absorption	ISO 140-8 : 26 dB
Luxery class	: LC2
DOP-nr	: 1016-2612
Prodis-nr	: in application

## ELECTROSTATIC

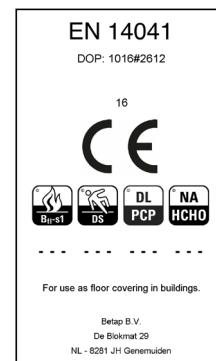
Static loading	: Anti-static
Walking test	EN 1815 : ≤ 0.02 KV
Horizontal resistance	ISO 1096 5 : 8 x 10. <sup>9</sup> Ohm
Vertical resistance	ISO 1096 5 : 4 x 10. <sup>9</sup> Ohm

## FLAMMABILITY

Reaction to fire	EN ISO 9239-1 : Bfl-s1
Reaction to fire	BS 4790 : Low radius of effect of ignition

## COLOUR FASTNESS

Light	ISO 105 B02 : 7.0 - 8.0
Rubbing	ISO 105 x12 : 4.0 - 5.0
Water	ISO 105 E01 : 4.0 - 5.0

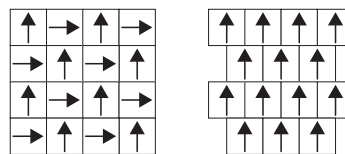


## INSTALLATION

Before installation, check that tiles are from the same dye batch number. Batches should not be mixed in the same location. All floor surfaces should be clean, dry and flat. Tiles should be left at room temperature for at least 24 hours before fitting.

## LAYING DIRECTIONS

Before installation, check that tiles are from the same dye batch number. Batches should not be mixed in the same location. All floor surfaces should be clean, dry and flat. Tiles should be left at room temperature for at least 24 hours before fitting.



## CUTTING

Cut with a Stanley knife or similar, preferably from the back, then part the surface pile.

## MAINTENANCE

Regular vacuum cleaning is essential. Spills and surface stains can be removed by sponging with a damp cloth, or for more resistant stains, with a mild detergent solution.



It is strongly recommended that a protecting mat i.e. keyhole mat or similar is used under castor chairs. Colours may vary from those shown on the sampling due to the manufacturing process. No claims will be considered as a result of improper application, installation of maintenance. Pile pressure marks shading and soiling are not manufacturing defects. all specifications are approx.

All Rights reserved to alter technical specifications

Betap Tufting BV  
P.O. Box 119, 8280 AC Genemuiden  
The Netherlands  
T +31(0)38 386 10 60  
E centralmail@betap.com  
I www.betap.com

