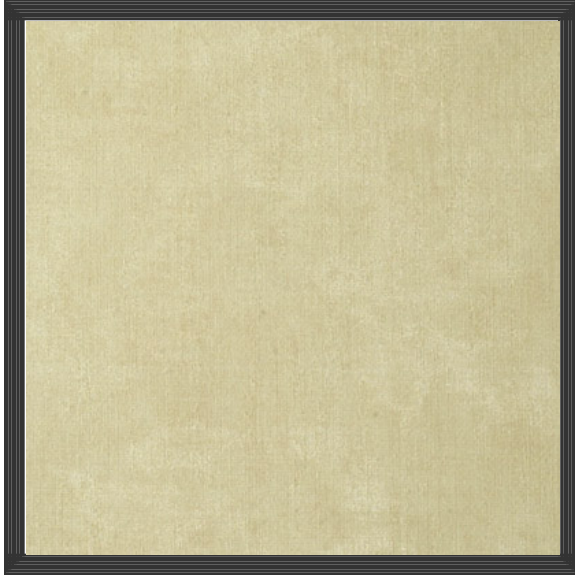


# Product Specification

---



## Watermark Moire | Banana

**6035WM**

### Len-Tex Contract

Stunning! When you want to make an impact, this rich textile effect from Len-Tex is guaranteed to be noticed. Not your traditional moiré, the uneven, wavy nature of this watermarked moiré creates a design which is distinctly different and modern. First introduced in a limited palette in the Paloma Collection, by Len-Tex, Watermark Moiré was so spectacular, that it begged to be shown in more colors! Offered now in a palette of 31 hues, this tip card dazzles with such rich silk colors as deep teal, plum, magenta, willow green and island blue.

---

### Product Specifications

---

**Content:** Fabric-backed Vinyl

**Width:** 54"

**Weight (oz/lyd):** 21

**Weight (oz/sqyd):** 14

**Type:** Type II

**Backing:** Osnaburg

**Pattern Match:** Random reversible

**Fire Rating:** Class A

**Flame Spread:** 5

**Smoke Developed:** 15

---

---

### 3rd Party Certifications

---

Recyclable

CA 01350

SCS IndoorAdvantage Gold

---

---

### Features

---

Printed with water-based inks

---