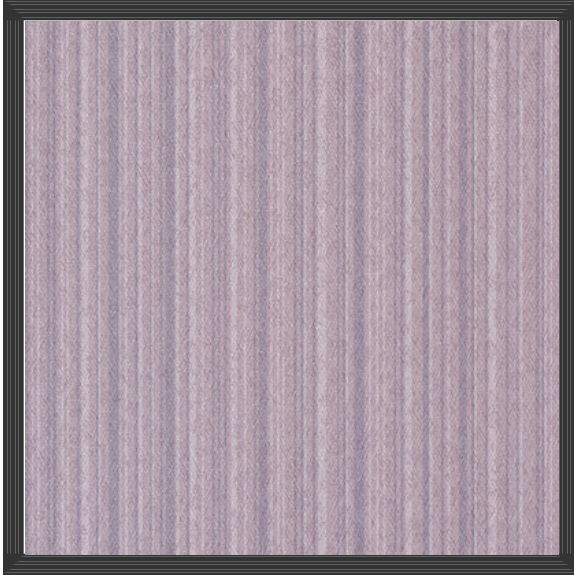


Product Specification



Iden | Thistle

ENV3060ID

Len-Tex Surface iQ

A new twist on a conventional stripe, Iden incorporates a soft pearl dappled print that adds both depth and textural appeal. The juxtaposition of the crisp linear stripe combined with the subtle and organic effect of the dappled splashes makes it a visually unique design that works equally well in formal or casual settings.

Product Specifications

Content: Polyethylene

Width: 54"

Weight (oz/lyd): 19.5

Weight (oz/sqyd): 13

Type: Type II

Backing: Osnaburg

Repeat: 18" Vertical x 13" Horizontal

Pattern Match: Non-reversible straight across match

Fire Rating: Class A

Flame Spread: 20

Smoke Developed: 5

3rd Party Certifications

Cradle to Cradle

GreenSpec Listed

CA 01350

SCS IndoorAdvantage Gold

Features

Printed with water-based inks
