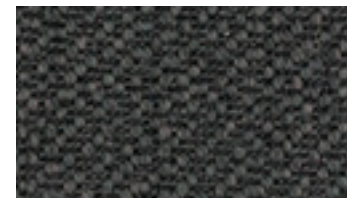


# HELIX & HELIX TILES



Helix 1110



Helix 0010



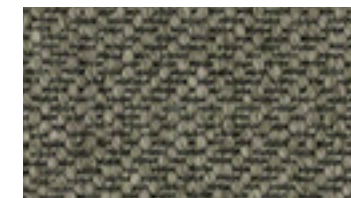
Helix 0910



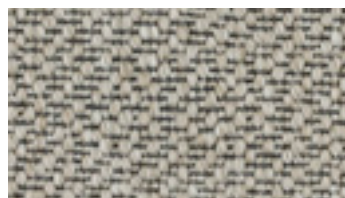
Helix 0560



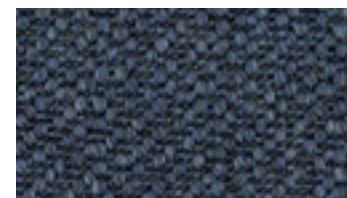
Helix 0100



Helix 0940



Helix 0920



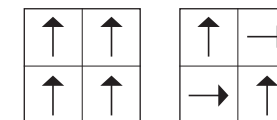
Helix 0070



Helix 0120

## Technical specifications for Helix:

<b>Weaving structure</b>	ISO 2424	woven contract looppile
<b>Pile material</b>	ISO 2424	100% polyamide
<b>Backing</b>	ISO 2424	textile
<b>Width</b>	ISO 3018	4m
<b>Pile height</b>	ISO 1766	2 mm
<b>Total height</b>	ISO 1765	3,5 mm
<b>Pile weight</b>	ISO 8543	630 g/m <sup>2</sup>
<b>Total weight</b>	ISO 8543	2000 g/m <sup>2</sup>
<b>Pile density</b>	ISO 1763	120.000/m <sup>2</sup>
<b>Wearing Class</b>	EN 1307	class 33 extra heavy contract
<b>Fire Classification</b>	ISO 13501-1	Cfl - s1
<b>Sound absorption</b>	ISO 354	± aw : 0,15
<b>Sound Insulation</b>	ISO 10140	± 17 dB
<b>Thermal resistance</b>	ISO 8302	0.10 / 0.07 m <sup>2</sup> K/W ; suitable for floor heating
<b>Static control</b>	ISO 6356	permanently antistatic
<b>Body Voltage</b>	ISO 6356	< 1,5 kV
<b>CE #</b>		2531-CPR-CXA10134



## Additionally for Helix tiles:

<b>Size standard</b>	ISO 3018	48 x 48 cm
<b>Special sizes</b>		96 x 96 cm min. 200 m <sup>2</sup> 24 x 96 cm min. 200 m <sup>2</sup> 48 x 96 cm min. 200 m <sup>2</sup>
<b>Backing</b>	ISO 2424	felt backing 350 g/m <sup>2</sup>
<b>Total height</b>	ISO 1765	5 mm
<b>Total weight</b>	ISO 8543	2800 g/m <sup>2</sup>
<b>Sound absorption</b>	ISO 354	± aw : 0,20
<b>Sound Insulation</b>	ISO 10140	± 18 dB
<b>CE #</b>		2531-CPR-CXA10218
<b>Installation</b>		chessboard or monolithic
<b>Special colours</b>		min. 200 m <sup>2</sup>