



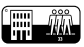






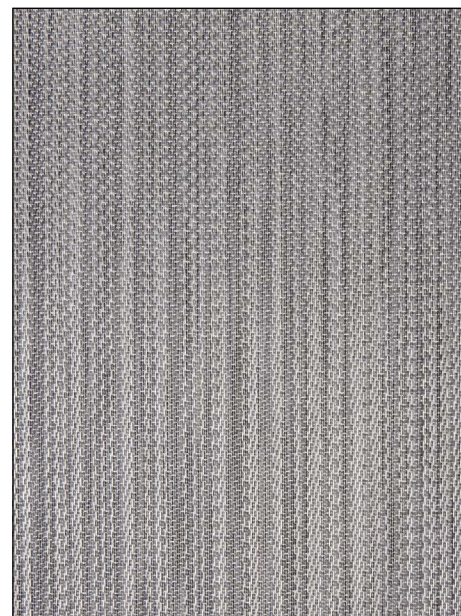
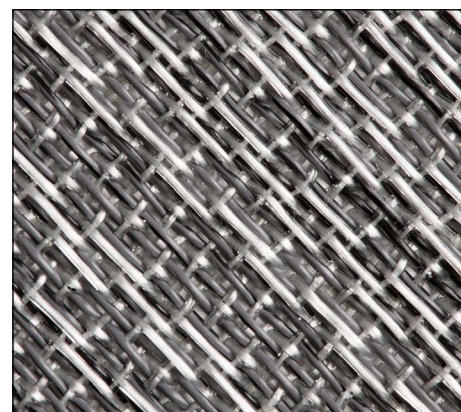


## DIAMOND

## Vinyl / Rolls

2tec2's woven vinyl range is a synthetic floor covering, composed of vinyl yarns with glass fibre core, woven together on jacquard looms, and finished with a homogenous vinyl backing reinforced with a non-woven glass fibre. Thanks to its unique composition, this superior flooring is resistant to wear and adheres to the highest quality standards. For high traffic locations, 2tec2 delivers all of the advantages of woven vinyl - durability, hygiene and chemical, water and stain resistance - combined with the visual appeal of woven textiles.

|  |                                       |                                |   |
|--|---------------------------------------|--------------------------------|---|
|  | <b>Manufacturing process</b>          | Jacquard woven                 |   |
|  | <b>Composition</b>                    | 80% vinyl / 20% fiberglass     |   |
|  | <b>Backing</b>                        | Vinyl                          |   |
|    | <b>Total thickness</b>                | ISO 1765                       | 2,5 mm<br>0.1"                                    |
|   | <b>Total weight</b>                   | ISO 8543                       | 2200 g/m <sup>2</sup><br>64.88 oz/yd <sup>2</sup> |
|  | <b>Roll width</b>                     | 200 cm<br>6.6'                 |   |
|  | <b>Roll length</b>                    | ca. 30 m<br>32.8 yd            |   |
|  | <b>Level of Use</b>                   | EN 15114<br>ASTM D5252         | Class 33<br>Heavy commercial use                  |
|  | <b>Castor chair suitability</b>       | EN 985                         | Continuous use                                    |
|  | <b>Reaction to fire</b>               | EN 13501-1                     | Bfl S1  |
|  | <b>Walking test</b>                   | ISO 6356<br>AATC 134-2006      | < 2 kv<br>permanently antistatic                  |
|  | <b>Light fastness</b>                 | ISO 105-B02                    | ≥ 7   |
|  | <b>Slip resistance</b>                | EN 13893<br>ASTM C1028-07      | ≥ 0,3<br>0,85                                     |
|  | <b>Impact sound</b>                   | ISO 140-8                      | 14 dB   |
| CE   | <b>CE Certificate</b>                 | EN 14041                       | 0493-CPD-0035                                     |
|  | <b>Recommended Glue<sup>(*)</sup></b> | Multi-Coll (www.wulff-gmbh.de) |   |



(\*) Multi-Coll is the only certified adhesive glue. Any other glue will not ensure closed seams on the long term and claims will not be covered by 2tec2 warranty.