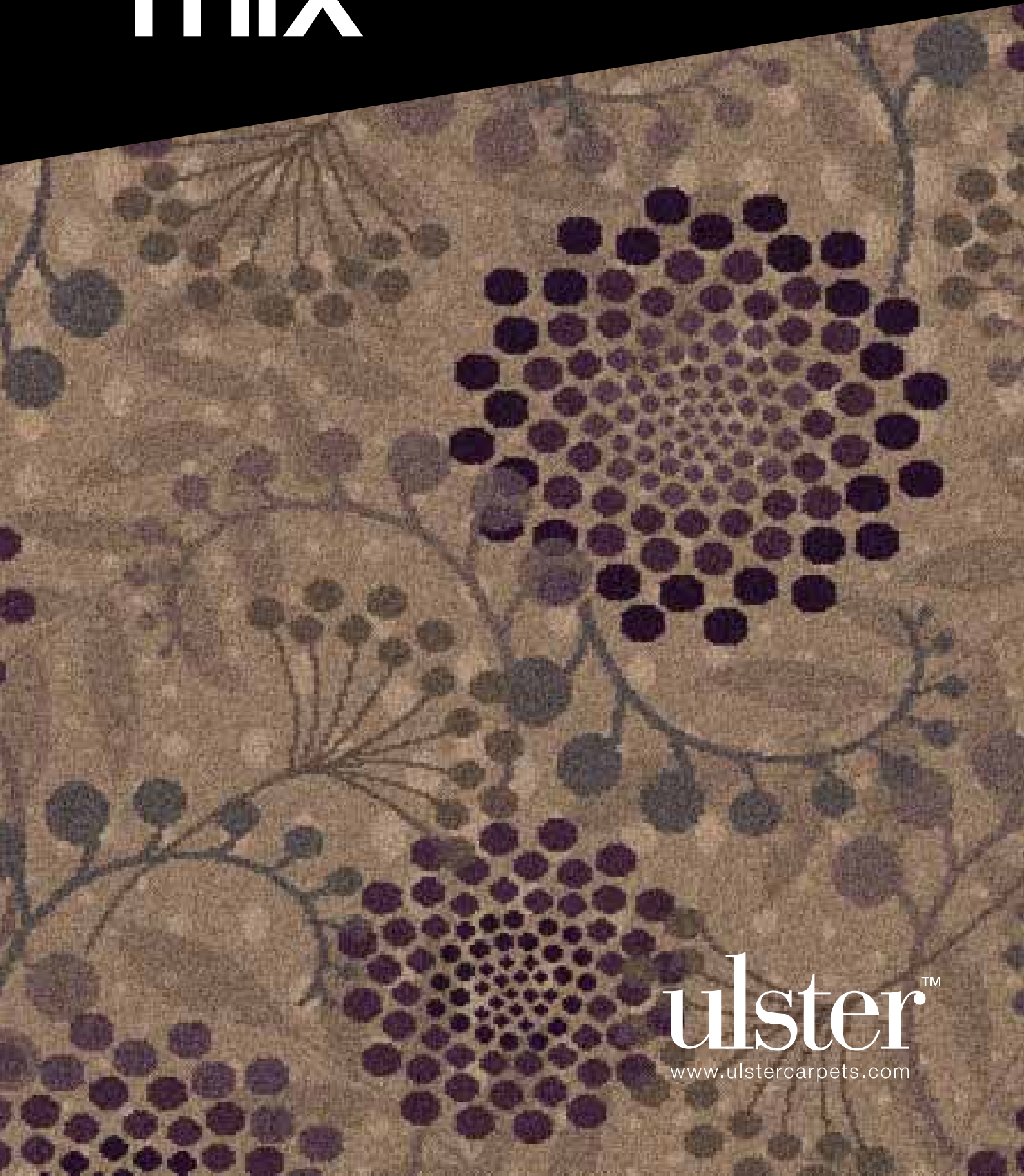


the **mix**



ulsterTM
www.ulstercarpets.com

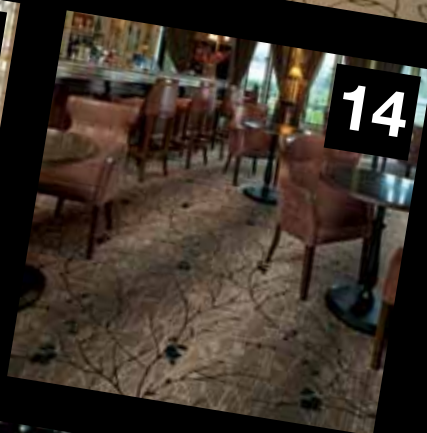
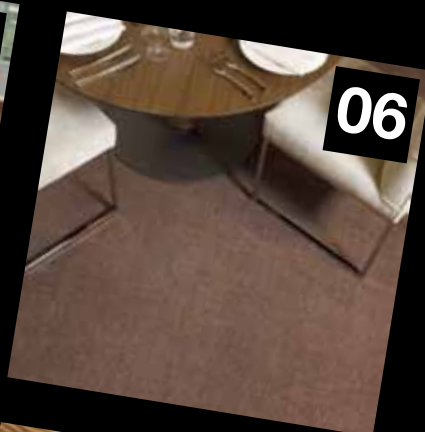
Contents

04 Bloom
06 Contour

08 Crackle
10 Freedom

12 Shimmer
14 Silhouette

16 Strata
18 Swirl



20 Specification Information
22 The Ulster Story

the mix

the mix, Ulster's stock contract collection typifies our core values: design excellence, customer focus and outstanding product quality.

Designed exclusively to meet the varied demands of the international hospitality industry, **the mix** is guaranteed to complement any commercial setting.

the mix consists of 8 contemporary designs available in 4m width.

Each design is woven in 9 row axminster quality - 80% wool / 20% nylon and as such is suitable for use in many contract applications.

the mix is a stock contract collection, available immediately and with no minimum order.

As with all axminster carpet produced at our factory in Portadown, Northern Ireland, **the mix** is manufactured to the very highest environmental standards.



Bloom

05



Serenity
Design 100690-2



Mystique
Design 101371-1



Moonlight
Design 101368-1

Repeat 100cm x 100cm (39.4" x 39.4") Half Drop



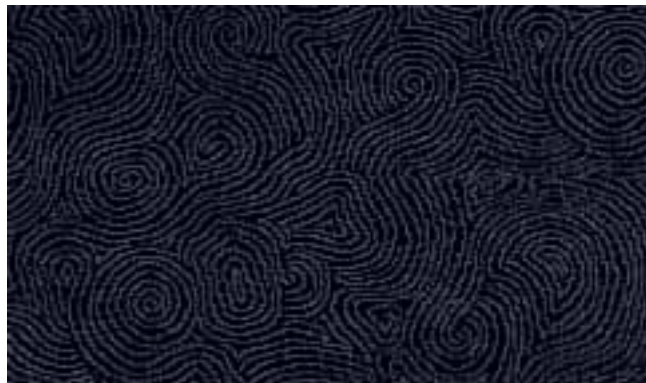
Contour



Taupe
Design 83982-6

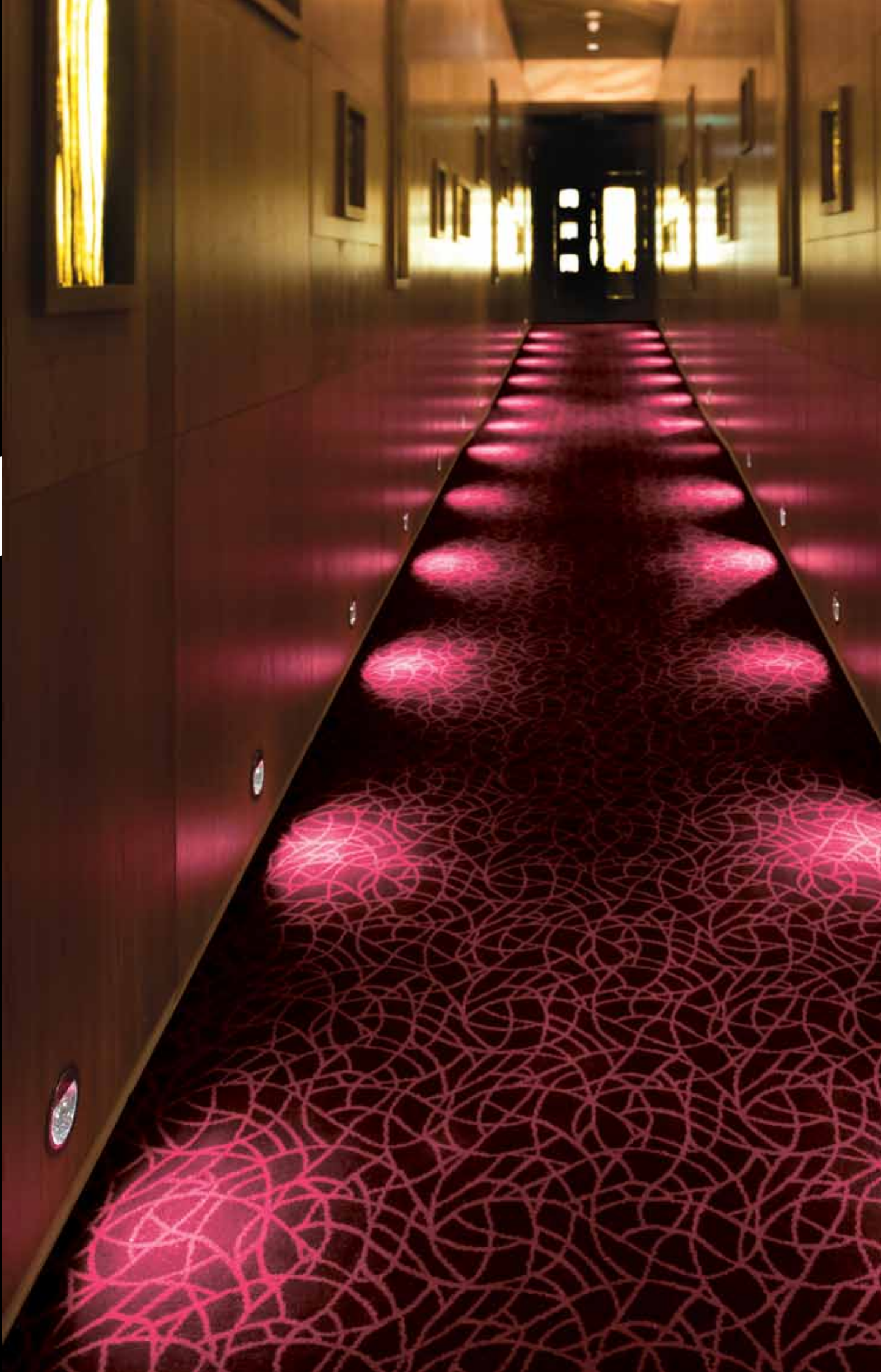


Fossil
Design 83982-18



Graphite
Design 83982-4

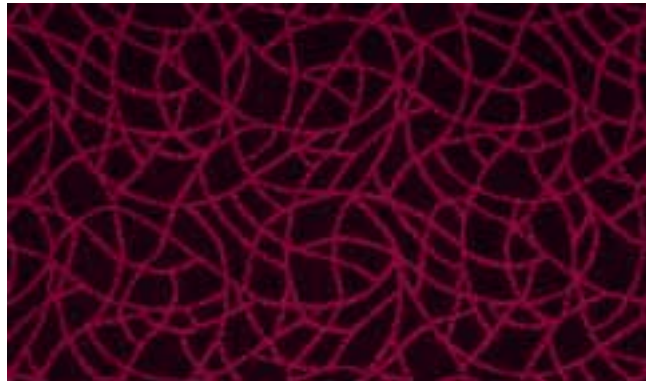
Repeat 50cm x 50.2cm (19.7" x 19.8") Half Drop



Crackle

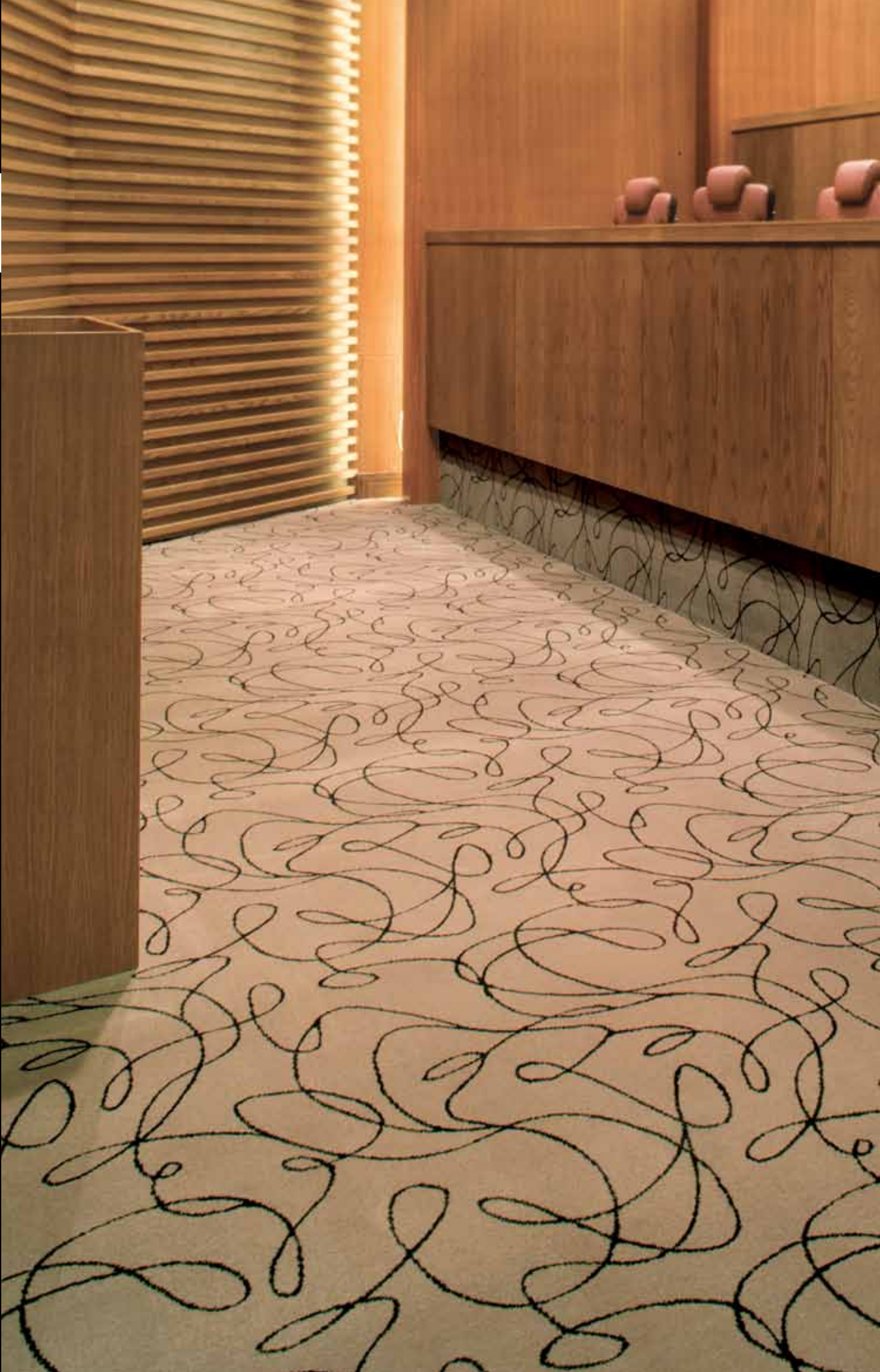


Mole
Design 86551-7



Cranberry
Design 86839-2

Repeat 50cm x 50.2cm (19.7" x 19.8") Half Drop



Freedom



Oyster
Design 86169-10



Ash
Design 86169-4



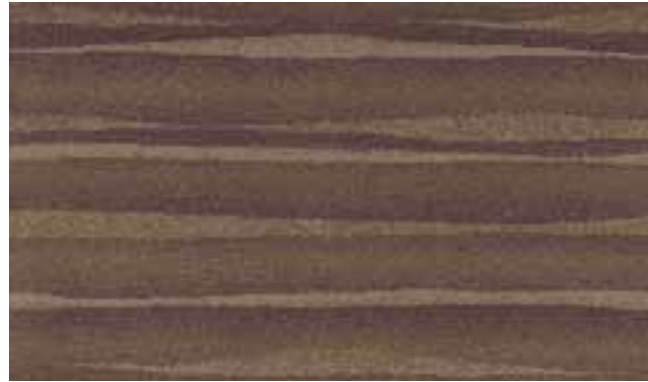
Slate
Design 86169-1

Repeat 100cm x 98.8cm (39.4" x 38.9") Half Drop

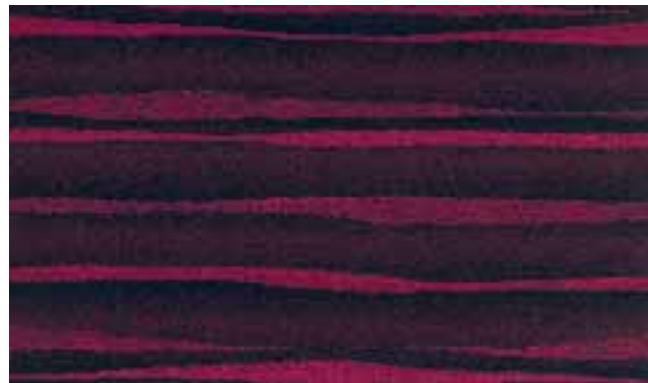




Shimmer



Drift
Design 101000-1



Cherry
Design 101000-6



Mulberry
Design 101000-3

Repeat 100cm x 100cm (39.4" x 39.4") Straight Match



Silhouette



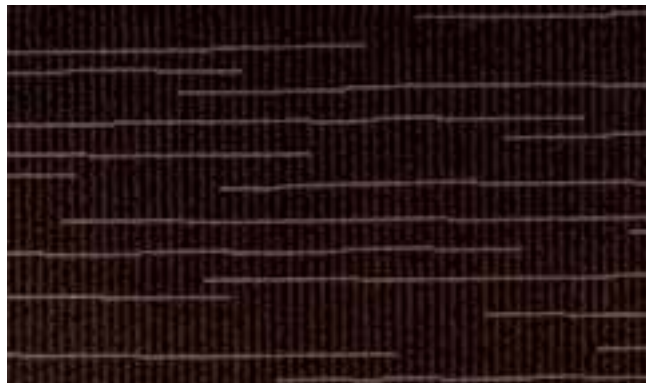
Dusk
Design 101637-1



Strata



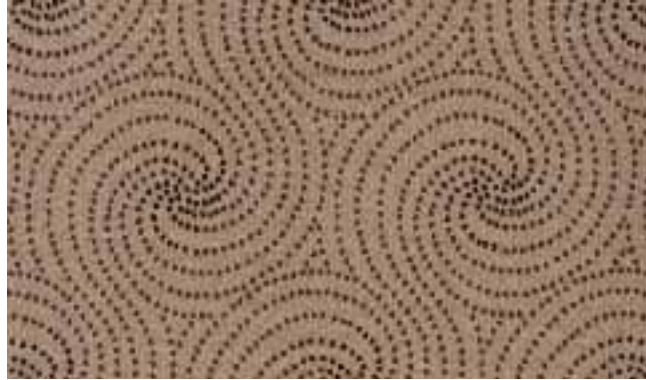
Stone
Design 86604-8



Buffalo
Design 86604-10



Swirl



Linum
Design 86440-10



Berry
Design 86440-11



Peacock
Design 86440-27



Panther
Design 86440-14

Repeat 50cm x 39cm (19.7" x 15.4") Straight Match

Specification Information

Suitability

Heavy Contract, Extra Heavy Domestic

Qualité

Usage commercial intensif, Usage domestique très intensif

Qualität

Starke Anwendung im Objektbereich, Sehr starke Anwendung im Privatbereich

Pile Yarn

80% wool (mothproofed) / 20% nylon

Composition du Fil

80% laine (traité à l'antimite) / 20% nylon

Polzusammensetzung

80% Schurwolle (mottenschutz) 20% Nylon

Backing Yarn

Polypropylene

Support dossier

Polypropylène

Rückenmaterial

Polypropylene

Widths available

4.00m (13'1")

Largeurs disponibles

4,00m

Lieferbreiten

4,00m

Pile Height

6.35mm (0.25")

Hauteur de velours

6,35mm au-dessus du dossier

Polhöhe über Grundgewebe

6,35mm

Pitch

27.56 per dm, 7 per inch

Serrage chaîne

27,56 par 10cm

Kettdichte

27,56 pro 10cm

Rows

35.43 per dm, 9 per inch

Serrage trame

35,43 par 10cm

Schussdichte

35,43 pro 10cm

Total Pile Weight

1255g/m2 (37.02 oz/yd2) +/-10%

Poids total de velours

1255 g/m2 +/-10%

Poleinsatzgewicht

1255 g/m2 +/-10%

Please note

All cut pile fabrics are liable to show light and dark areas known as shading. This is characteristic of all luxury woven carpets.

Carpet should be professionally laid according to BS 5325 ISO13746: 2000 using good quality underlay.

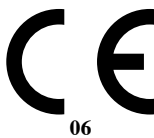
A noter

Les moquettes à velours coupé peuvent parfois présenter des alterances de zones claires et foncées, connu sous le nom "miroitement". Ceci est caractéristique des moquettes haut de gamme. Toute moquette doit être posée selon la norme BS 5325 ISO 13746: 2000 en utilisant une thibaude de bonne qualité.

Bemerkung

Bei Veloursteppichen (Florgarn geschnitten) können in seltenen Fällen bleibende Schattierungen (Shading) auftreten, deren Ursache nicht Material – oder Konstruktionsbedingt ist. Shading entsteht durch unterschiedliche Lichteinwirkung auf das Polmaterial und ist ein Charakter von luxuriösen Teppichen. Teppichboden sollte gemäss BS 5325 ISO 13746: 2000 mit einer Qualitätsunterlage verlegt werden.

Design Name Référence du dessin Dessinname	Design Number Référence du dessin Designnummer	Colourway Coloris Farbnummer	Repeat Raccord Rapport
Bloom Bloom Bloom	101371-1 101368-1 100690-2	Mystique Moonlight Serenity	100cm x 100cm Half Drop / Raccord sauté / halb versetzt (39.4" x 39.4" Half Drop / Raccord sauté / halb versetzt)
Contour Contour Contour	83982-4 83982-6 83982-18	Graphite Taupe Fossil	50cm x 50.2cm Half Drop / Raccord sauté / halb versetzt (19.7" x 19.8" Half Drop / Raccord sauté / halb versetzt)
Crackle Crackle	86839-2 86551-7	Cranberry Mole	50cm x 50.2cm Half Drop / Raccord sauté / halb versetzt (19.7" x 19.8" Half Drop / Raccord sauté / halb versetzt)
Freedom Freedom Freedom	86169-1 86169-4 86169-10	Slate Ash Oyster	100cm x 98.8cm Half Drop / Raccord sauté / halb versetzt (39.4" x 38.9" Half Drop / Raccord sauté / halb versetzt)
Shimmer Shimmer Shimmer	101000-1 101000-3 101000-6	Drift Mulberry Cherry	100cm x 100cm Straight Match / Raccord droit / Seite an Seite (39.4" x 39.4" Straight Match / Raccord droit / Seite an Seite)
Silhouette	101637-1	Dusk	100cm x 100cm Half Drop / Raccord sauté / halb versetzt (39.4" x 39.4" Half Drop / Raccord sauté / halb versetzt)
Strata Strata	86604-8 86604-10	Stone Buffalo	200cm x 100cm Straight Match / Raccord droit / Seite an Seite (78.8" x 39.4" Straight Match / Raccord droit / Seite an Seite)
Swirl Swirl Swirl Swirl	86440-10 86440-11 86440-14 86440-27	Linum Berry Panther Peacock	50cm x 39cm Straight Match / Raccord droit / Seite an Seite (19.7" x 15.4" Straight Match / Raccord droit / Seite an Seite)



EN 14041:2004

Reaction to Fire: Tested according to
EN ISO 9239-1:2002
EN ISO 11925-2:2002

Slip Resistance: NPD



Cert. No.FM 877
ISO 9001
Registered

The Ulster Story

22



A family owned company with more than 70 years of experience in producing the finest woven axminster and wilton carpets, Ulster has established an enviable position as one of the world's leading carpet manufacturers.

With sales and design offices in the UK and Ireland, Europe, the Middle East and North America, Ulster has an unrivalled reputation for cutting edge design, state of the art production facilities and exceptional product quality.

Ulster has revolutionised the carpet industry with the introduction of its award winning PSYLO™ weaving technology.

Enabling designers to work from a colour palette of up to 25 colours with no design or pattern repeat restrictions, PSYLO™ has heralded an exciting new era in carpet design and manufacture.

PSYLO™ was developed and implemented at the company's manufacturing site in Portadown, Northern Ireland and it is testament to the company's commitment to its local community and workforce that this should be the case.

All axminster manufacturing by Ulster continues to take place in Portadown thus ensuring that the highest environmental standards are achieved.

As one of the first textile companies in the UK to be awarded the ISO14001 environmental management certificate because of its ongoing commitment to protecting the environment, Ulster's sustainable ethos has been an integral component of the company's operations for many years.

Ulster was also the first textile manufacturer in the UK and Ireland to achieve the "Carbon Trust Standard" for significant reductions in its carbon emissions.

Since then the company has taken this a step further and 100% of its post production waste is now reused or recycled and Ulster's aim is for its manufacturing to be carbon neutral by 2020.

Ulster participates in the Green Label Plus program and Ulster products contribute towards LEED® points for projects seeking the Green Building Rating System™ certification. This is a further endorsement of Ulster's focus on reducing its environmental impact.

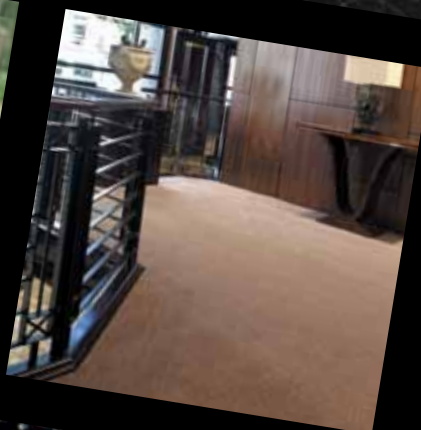
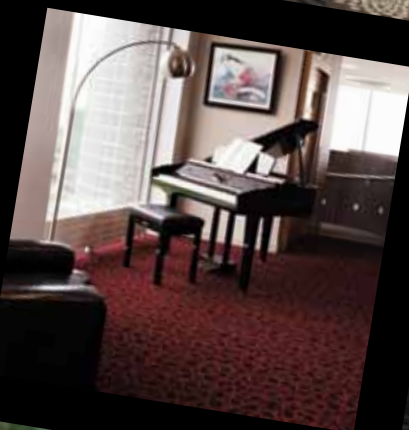
PSYLO™ weaving technology provides maximum manufacturing efficiency and minimum yarn waste. Combined with the company's "right first time" ethos which is evident at every stage of the weaving process, Ulster has set the industry standard for 21st century sustainable manufacturing.

Credits





Scan the QR code to view Ulster's online contract collections
or visit www.ulstercarpets.com/contractcollections



ulster™

www.ulstercarpets.com

Ulster Carpets
Castleisland Factory
Craigavon
N. Ireland
BT62 1EE

UK
Ireland
Europe
Middle East
North America

uclondon@ulstercarpets.com
ucireland@ulstercarpets.com
uceurope@ulstercarpets.com
ucdubai@ulstercarpets.com
ucamerica@ulstercarpets.com

Tel: +44 (0)28 3833 4433
Fax: +44 (0)28 3833 3142

